



# Double-glass photovoltaic panel installation spacing





## Overview

---

When installing, the interval between two adjacent conventional modules is recommended  $> 10\text{mm}$ . The minimum clearance between two adjacent double-sided modules is recommended  $> 20\text{mm}$ ; If there are special requirements, please confirm with Jinko and install it;. This guide contains information regarding the installation and safe handling of Solar- space photovoltaic module (hereafter is referred to as “module”). During Modules installation and routine maintenance, operators should follow all safety precautions in this manual and local regulations. (hereafter referred to as “JA Solar”). Failure to follow these instructions may result in death. ou have purchased a high-quality product. This installation manual contains important information on safety, installation and operation of the modules, which you need to read thoroughly and carefully and take note of all instructions before installing, wiring, operati read carefully and have to be. The installation work of the PV array can only be done under the protection of sun-sheltering covers or sunshades and only qualified person can install or perform maintenance work on this module. Do not use this. JA Solar recommends that when installing modules at the seaside, stainless steel or aluminum materials should be used to contact the photovoltaic modules, and the installation parts should be well protected from corrosion. The tilt angle of the modules is measured between the surface of the modules.



## Double-glass photovoltaic panel installation spacing



### [INSTALLATION MANUAL OF STANDARD SOLAR MODULES](#)

Before attempting to install, wire, operate and / or service the module and other electrical equipment, all instructions should be read and understood. PV module connectors pass direct current (DC) when ...

### **JA SOLAR PV MODULES INSTALLATION MANUAL**

For detailed information on the best installation angle, please refer to standard solar photovoltaic installation guides or consult a reputable solar installer or systems integrator.



### [Solarspace Double Glass Photovoltaic Modules Installation Manual](#)

This guide contains information regarding the installation and safe handling of Solar- space photovoltaic module (hereafter is referred to as "module"). During Modules installation and routine maintenance, ...



### **JinkoSolar**

In most applications, Jinko solar PV modules should be installed in a location where they will receive maximum sunlight throughout the year. In the Northern Hemisphere, the module should typically face ...



### [HYPERION Installation Manual Double Glass . PDF . Solar Panel](#)

This document provides installation instructions for bifacial double glass photovoltaic modules. It covers safety precautions, codes and regulations, product identification, electrical and mechanical ...

### [Installation Manual of Standard Solar Modules](#)

The modules must be adjusted to the same installation angle for the same photovoltaic generator on string level for standard installation concepts (without further el. devices).



### [Double Glass Solar Modules Installation Manual . PDF . Solar Panel](#)

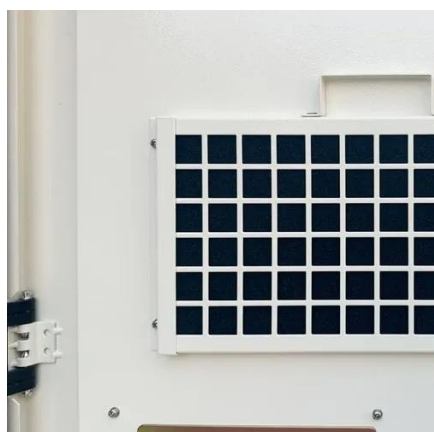
The manual includes detailed sections on mechanical and electrical installation, grounding, and maintenance care, along with specific instructions for various installation methods.



### [Double-glass photovoltaic panel quick installation drawings](#)



A double glass solar panel consists of two protective glass layers instead of the usual single glass layer and a laminated back sheet on the back side of the panel.



### [SolarSpace Double Glass Photovoltaic Modules Installation Manual](#)

These regulations vary depending on the installation location, such as building roof installation, vehicle-mounted applications, etc. Requirements may also vary with the voltage and current nature of the ...



## Contact Us

---

For catalog requests, pricing, or partnerships, please visit:

<https://iwap.com.pl>

Phone: +34 919 456 782

Email: [info@iwap.com.pl](mailto:info@iwap.com.pl)

Scan the QR code to access our WhatsApp.

