



Does the battery energy storage system for communication base stations require an environmental assessment





Overview

BESS are not currently required to obtain an environmental permit under the Environmental Permitting Regulations 2016 (as amended) (EPR) to operate. Battery Energy Storage Systems, or BESS, help stabilize electrical grids by providing steady power flow despite fluctuations from inconsistent generation of renewable energy sources and other disruptions. While BESS technology is designed to bolster grid reliability, lithium battery fires at some. by an agency of the U. Government nor any agency thereof, nor any of their employees, makes any warranty, expressed or implied, or assumes any legal liability or responsibility for the accuracy, completeness, or usefulness, of any information, apparatus, product, or. This review explores the multifaceted aspects of safety and environmental considerations in battery storage systems within the context of renewable energy. A battery energy storage system (BESS) is an electrochemical device that charges (or collects energy) from the grid or a power plant and then discharges that energy at a later time to.



Does the battery energy storage system for communication base station



Utility-Scale Battery Energy Storage Systems

UL 9540 certification is essential for verifying that energy storage systems, such as batteries and related equipment, meet rigorous safety standards to prevent hazards related to electrical, mechanical, and ...

The safety and environmental impacts of battery storage systems ...

In conclusion, the safety and environmental impacts of battery storage systems in renewable energy present complex challenges that require coordinated action from policymakers, industry ...



Battery Energy Storage Systems: Main Considerations for Safe

Following the incident, EPA has required the Gateway facility to conduct extensive environmental monitoring during battery handling and disposal operations and submit detailed work ...

What are the Essential Site Requirements for Battery Energy Storage

In addition to logistical considerations, the location should be carefully assessed for environmental factors such as the potential for flooding, seismic activity, or extreme weather conditions.



2MW / 5MWh
Customizable

[New Regulations for Battery Energy Storage Solutions](#)

BESS are not currently required to obtain an environmental permit under the Environmental Permitting Regulations 2016 (as amended) (EPR) to operate. However, concerns ...



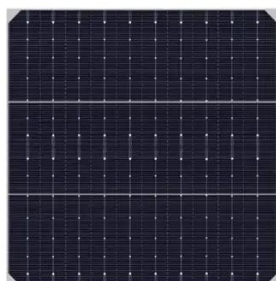
[Understanding Battery Storage Environmental Assessments: An In ...](#)

The ecological effects of energy storage systems necessitate thorough battery storage environmental assessments due to their complexity. A primary concern is the depletion of natural ...



[Design Considerations and Energy Management System for ...](#)

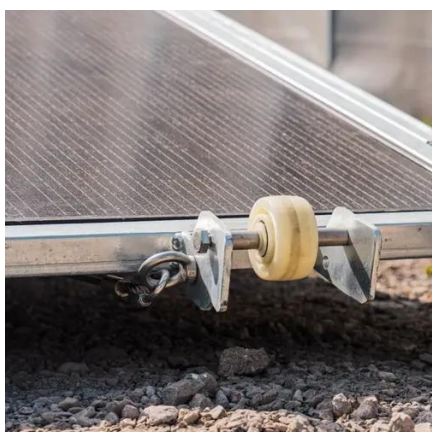
This paper presents the design considerations and optimization of an energy management system (EMS) tailored for telecommunication base stations (BS) powered by



Battery Energy Storage Systems Report



by an agency of the U.S. Government. Neither the U.S. Government nor any agency thereof, nor any of their employees, makes any warranty, expressed or implied, or assumes any legal liability or ...



[Grid-Scale Battery Storage: Frequently Asked Questions](#)

As prices for BESS continue to decline and the need for system flexibility increases with wind and solar deployment, more policymakers, regulators, and utilities are seeking to develop policies to jump ...

[Carbon emission assessment of lithium iron phosphate batteries](#)

This study conducts a comparative assessment of the environmental impact of new and cascaded LFP batteries applied in communication base stations using a life cycle assessment ...




12.8V6Ah

- Nominal voltage (V):12.8
- Nominal capacity (Ah):6
- Rated energy (WH):76.8
- Maximum charging voltage (V):14.6
- Maximum charging current (A):6
- Floating charge voltage (V):13.6-13.8
- Maximum continuous discharge current (A):10
- Maximum peak discharge current @10 seconds (A):20
- Maximum load power (W):100
- Discharge cut-off voltage (V):10.8
- Charging temperature (°C):-50
- Discharge temperature (°C): -20-+60
- Working humidity: $\leq 95\%$ RH (non condensing)
- Number of cycles (25 °C, 0.5C, 100%DoD): >2000
- Cell combination mode: 32700-4s1p
- Terminal specification: T2 (6.3mm)
- Protection grade: IP65
- Overall dimension (mm):50*70*107mm
- Reference weight (kg):0.7
- Certification: un38.3/msds



Contact Us

For catalog requests, pricing, or partnerships, please visit:

<https://iwap.com.pl>

Phone: +34 919 456 782

Email: info@iwap.com.pl

Scan the QR code to access our WhatsApp.

