



# Does the Communications Administration regulate base station power generation





## Overview

---

Fixed CPE stations transmitting in the 2305-2320 MHz band or in the 2345-2360 MHz band must employ automatic transmit power control when operating so the stations operate with the minimum power necessary for successful communications. ) to regulate interstate and international communications by radio, television, wire, satellite, and cable. The agency is headed. Visit the Electric Power Generation, Transmission and Distribution Standard Page for information on the final rule. This page is a part of OSHA's commitment to provide employers and workers in the electric power generation, transmission, and distribution industry with information and assistance to. In case of any existing or perceived difference in contents between such versions and/or in print, the prevailing version of an ETSI deliverable is the one made publicly available in PDF format on ETSI deliver repository. 117-169 (commonly known as the Inflation Reduction Act or IRA) in 2022. The Federal Energy Regulatory Commission (FERC) and other agencies have.



## Does the Communications Administration regulate base station power



### [Federal Communications Commission: Agency Regulatory ...](#)

Three recent FCC orders illustrate the types of rules that might be challenged as exceeding FCC authority under Loper Bright or the major questions doctrine.

### **eCFR :: 47 CFR 24.232 -**

§ 24.232 Power and antenna height limits. (a) (1) Base stations with an emission bandwidth of 1 MHz or less are limited to 1640 watts equivalent isotropically radiated power (EIRP) with an antenna height ...



### **eCFR :: 47 CFR Part 90 Subpart A -**

The rules in this part are promulgated under Title III of the Communications Act of 1934, as amended which vests authority in the Federal Communications Commission to regulate radio ...

### **TS 138 104**

Aggregated BS Channel Bandwidth: The RF bandwidth in which a Base Station transmits and receives multiple contiguously aggregated carriers. The aggregated BS channel bandwidth is measured in MHz.

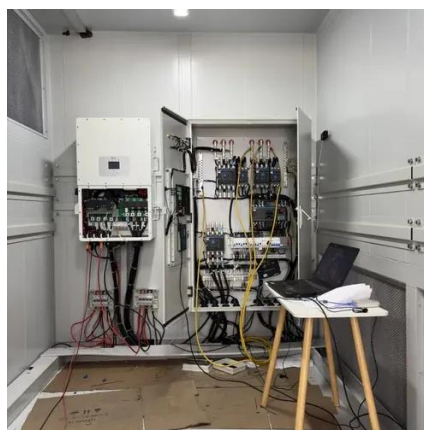


### Electricity Transmission: What Is the Role of the Federal ...

Any changes to federal electricity transmission policies could potentially have lasting impact on the U.S. electricity system given the long-lived nature (typically 50 years or more) of ...

### **eCFR :: 47 CFR Part 27 Subpart C -**

Fixed CPE stations transmitting in the 2305-2320 MHz band or in the 2345-2360 MHz band must employ automatic transmit power control when operating so the stations operate with the minimum ...



### **1910.269**

The provisions of paragraph (d) of this section apply to the use of lockout/tagout procedures for the control of energy sources in installations for the purpose of electric power generation, including ...

### 5G and energy internet planning for power and communication ...

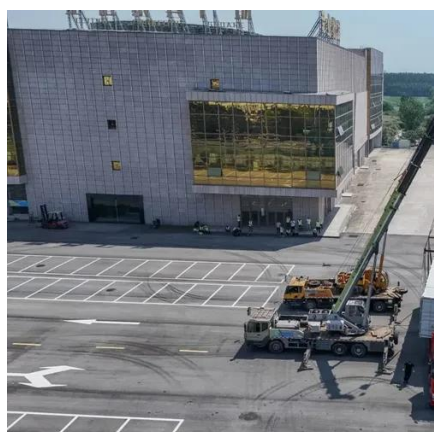


Our research addresses the critical intersection of communication and power systems in the era of advanced information technologies. We highlight the strategic importance of ...



### [Electric Power Generation, Transmission, and Distribution Industry](#)

Visit the Electric Power Generation, Transmission and Distribution Standard Page for information on the final rule.



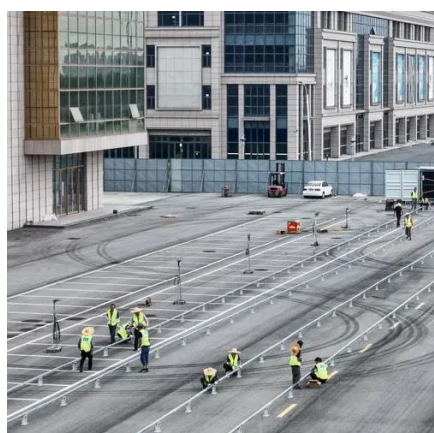
### **47 CFR § 27.50**

Mobile and portable stations transmitting in the 2305-2315 MHz band or in the 2350-2360 MHz band must employ automatic transmit power control when operating so the stations operate with the ...



### [Optimization Control Strategy for Base Stations Based on ...](#)

Abstract: With the maturity and large-scale deployment of 5G technology, the proportion of energy consumption of base stations in the smart grid is increasing, and there is an urgent need to reduce ...





## Contact Us

---

For catalog requests, pricing, or partnerships, please visit:

<https://iwap.com.pl>

Phone: +34 919 456 782

Email: [info@iwap.com.pl](mailto:info@iwap.com.pl)

Scan the QR code to access our WhatsApp.

