



# Do wind turbines rely purely on wind





## Overview

---

A wind turbine works like a fan but in reverse: instead of using electricity to make wind like a fan, wind turbines use wind to make electricity. Others believe turbines consume more energy than they produce. Concerns about bird deaths, property values, and health effects dominate local planning meetings. The evidence tells a different story. This report examines the most common misconceptions using data from the U. Department of Energy. Wind energy is a form of renewable energy, typically powered by the movement of wind across enormous fan-shaped structures called wind turbines. Associate Professor of Engineering Systems and Atmospheric Chemistry, Engineering Systems Division and Department of Earth, Atmospheric and Planetary Sciences, Massachusetts Institute of Technology.



## Do wind turbines rely purely on wind



[Wind power , Description, Renewable Energy, Uses, Disadvantages](#)

Wind power is a form of energy conversion in which turbines convert the kinetic energy of wind into mechanical or electrical energy that can be used for power. Wind power is considered a ...

[Is Wind Energy Reliable? Assessing the Consistency and ...](#)

Wind does not blow uniformly across the earth; it fluctuates based on geographical location, time of year, and atmospheric conditions. Regions characterized by consistent and strong ...



### Wind Energy Factsheet

Over 2 Mt of wind turbine blades are expected to be retired in the U.S. by 2050. Customers can purchase renewable energy through unbundled renewable energy certificates (RECs), community ...

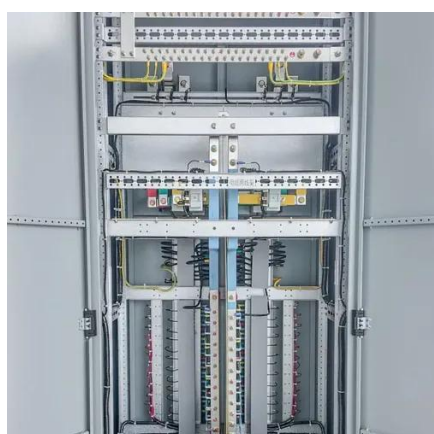
[Wind energy: how does it work? Is it renewable? Prysman](#)

While electricity powers fans to create artificial wind, wind turbines use wind to generate electricity, relying on the force generated by their propeller-like rotor blades.



### [How Does Wind Energy Work: Complete Guide To Wind Power 2025](#)

The power output of a wind turbine follows a cubic relationship with wind speed, meaning that doubling the wind speed increases power output by eight times. This relationship explains why ...



### [Wind Energy Myths: What the Science Actually Says](#)

A persistent myth claims wind turbines are net energy losers. The argument goes like this: mining materials, manufacturing components, transporting massive parts to remote sites, and ...



### [Frequently Asked Questions about Wind Energy](#)

A wind turbine works like a fan but in reverse: instead of using electricity to make wind like a fan, wind turbines use wind to make electricity. The wind turns the turbine's blades, which spin a shaft ...

### [Wind Energy Explained: Harnessing the Power of Wind Turbines](#)



Wind energy captures the power of moving air with turbines to produce clean, renewable electricity. When the wind blows, it spins the turbine blades, turning kinetic energy into electrical ...



### The truth about wind turbines: the wind is not always

While the wind may constantly be blowing somewhere, relying on that fact to justify overbuilding wind installations obscures the fact that the wind may not always be blowing where it ...



### **Wind Energy**

In any energy system that relies partly on wind, other energy sources have to be ramped up when winds are low.





## Contact Us

---

For catalog requests, pricing, or partnerships, please visit:

<https://iwap.com.pl>

Phone: +34 919 456 782

Email: [info@iwap.com.pl](mailto:info@iwap.com.pl)

Scan the QR code to access our WhatsApp.

