



Do communication base stations use generator sets





Overview

At present, the backup power supply of communication base stations mainly relies on small air-cooled diesel generators, whose main fuel is diesel. There are many inconveniences in the use of diesel, such as heavy weight, loud noise, and difficulty in starting.unicate, both in business and personally. Mobile devices are becoming our preferred method of communicating with each other. A telecommunication network relies on a. Remote Radio Heads (RRH): Facilitate wireless connections between the radio base station and antennas. The towers' design and location are strategically planned to meet coverage needs, with options. Diesel and gas generator sets for installation in base telecommunication stations (BTS). Yanmar engine generator sets with low fuel consumption levels.



Do communication base stations use generator sets



Low Voltage
Lithium Battery

6000+ Cycle Life

[Telecommunication Cell Towers Specifying a Generator Set for:](#)

Cell Towers form part of a network that is controlled and monitored from a central location. Frequently the generator controls are equipped with remote monitoring systems that monitors all the vital ...

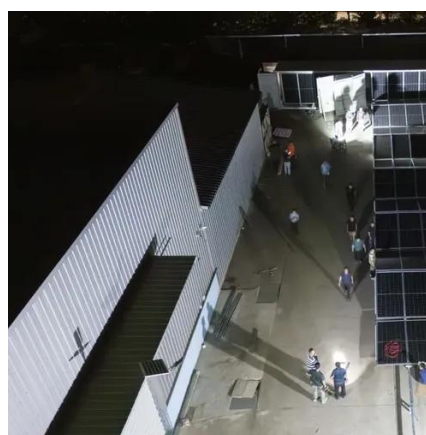


[Generators for Telecommunications Backup, Generac industrial Energy](#)

While diesel has been the traditional fuel choice, many telecommunications companies are now considering the use of natural gas or bi-fuel generators as standby power for telecomm. This is done ...

[three-phase diesel telecom generator for base stations](#)

We designed this three-phase diesel generator, specifically tailored for telecom base stations, through the optimized design and advanced technology, to ensure the provision of high-quality power output ...



[Application of natural gas generators in communication base stations](#)

At present, the backup power supply of communication base stations mainly relies on small air-cooled diesel generators, whose main fuel is diesel. There are many inconveniences in using diesel, such ...



Ensuring Connectivity: How Cell Tower Backup Generators Keep the

A: If a base station loses power during a natural disaster, emergency power systems, including generators and battery backups, activate to maintain continuous communication services.

generator sets for base telecommunications stations

The diesel generator sets for telecommunications can incorporate a special kit to extend service intervals up to 1,000 hours. The kit includes a larger oil tank that provides extra oil to the engine, ...



? Why Telecom Base Stations Need More Than Just ...

Picture this: It's a rainy night in a remote Nigerian town. A telecom base station hums in the background, powered solely by a diesel generator.

Application and Market Demand of Generator Sets in the ...



The communication field relies heavily on the efficient operation and continuous power supply of generator sets. Generator sets play a crucial role in ensuring uninterrupted communication ...



Cell Phone Towers Use Standby Power Generators for Communications

To prevent this, cellular towers and communication sites utilize emergency backup generators to maintain operations when utility power is interrupted. Backup Battery: Initially, if utility ...

Complete Guide to 5G Base Station Construction, Key Steps, ...

Key for connecting base stations into a network, this system ensures smooth communication. It becomes a top priority during power outages to maintain data flow. Outdoor base ...

TAX FREE    

ENERGY STORAGE SYSTEM

Product Model
HJ-ESS-215A(100KW/215KWh)
HJ-ESS-115A(50KW 115KWh)

Dimensions
1600*1280*2200mm
1600*1200*2000mm

Rated Battery Capacity
215KWH/115KWH

Battery Cooling Method
Air Cooled/Liquid Cooled



Contact Us

For catalog requests, pricing, or partnerships, please visit:

<https://iwap.com.pl>

Phone: +34 919 456 782

Email: info@iwap.com.pl

Scan the QR code to access our WhatsApp.

