



Dimensions of a 610W photovoltaic panel



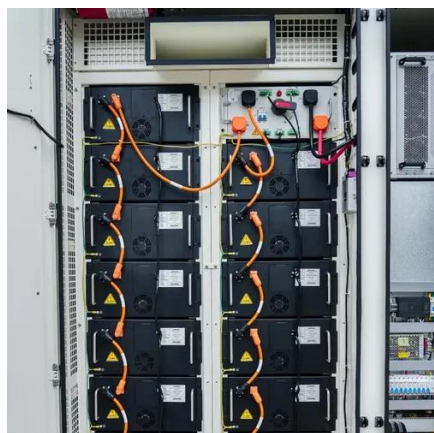


Overview

With a peak power output of 610W and bifacial cell technology, this panel achieves an impressive efficiency of 22.6%, allowing for high energy yields even in challenging conditions. 6% Open Circuit Voltage (Voc): 52.44 V. LUXEN PERC: Standard warranty 12 years, can be extended up to 15 years. Bluesun Solar offers high-efficiency 610W shingled solar panels designed for large-scale commercial and utility solar projects. Excellent Anti-PID performance guarantee via optimized mass-production process and materials control. The N-type. JA Solar 610W Bifacial Solar Panel - Maximum Power Output, Dual-Sided Energy Capture & Ultimate Durability The JA Solar 610W Bifacial Solar Panel is engineered to deliver exceptional energy efficiency and long-lasting durability, making it an ideal choice for large-scale solar projects. 5MWh annually per 10-panel array. That's enough to power three average homes, all.



Dimensions of a 610W photovoltaic panel



[Photovoltaic Panel 610 Size: The Ultimate Guide for Efficient Solar](#)

In the rapidly evolving solar industry, the photovoltaic panel 610 size has emerged as a game-changer for commercial and utility-scale projects. With 72-cell configurations and dimensions averaging 2.2m ...

[Canadian TOPCON N-Type Bifacial 610watt Solar Panel](#)

Voltage at Maximum Power (V_{mp}): Approximately 44.34V
Current at Maximum Power (I_{mp}): Approximately 13.76A
Dimensions: 2382 × 1134 × 30 mm
Weight: Approximately 32.8 kg
Glass: 2.0 ...



[610W Bifacial Solar Panel , JAM66D45-610/LB](#)

Designed for ground-mounted solar farms, commercial rooftops, and high-voltage solar systems (1500V DC), the JA Solar 610W panel reduces balance-of-system costs while maximizing energy yield.

[Understanding the Dimensions of 610 Photovoltaic Panels](#)

Physical Dimensions Breakdown
Typical residential panels: 1m x 1.6m (like a large coffee table)
Commercial 610W models: ~2.2m x 1.1m (comparable to a twin-size mattress)
Thickness: 3-4cm ...



[LUXEN SERIES 6 210 MONOFACIAL 120cells
590-610w ...](#)

LUXPOWER Mono I 590 - 610W MECHANICAL
CHARACTERISTICS Solar Cells No. of Cells
Dimensions Weight Front Glass Mono 120 (6x20)
2172 x 1303 x 35mm 31.0kg 1303±1 4-8*3 4 ...



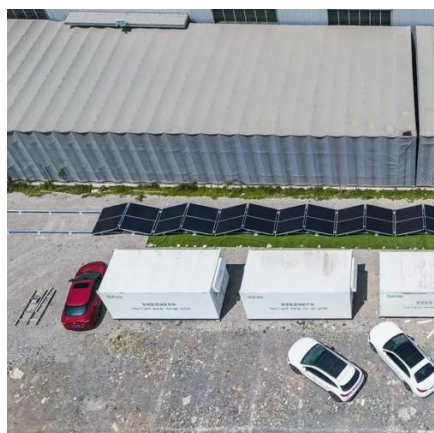
[CS6.1-72TB-610 610W Solar Panel Information](#)

See the table below for available information we have about Canadian Solar Inc CS6.1-72TB-610 solar panels. We do our best to provide information such as the CS6.1-72TB-610 panel dimensions, ...



**JKM590-610N-78HL4-BDV-F1-EN (IEC
2016).ai**

Specifications included in this datasheet are subject to change without notice.



[Solar Panel Size & Dimensions Guide 2025](#)
[Complete Specs](#)



In this comprehensive guide, you'll learn everything you need to know about solar panel sizing, from standard dimensions to weight considerations, helping you determine the perfect solar ...



[610 W , LONGI-PANEL-610W-LR7-72HGD-610M , NCA SOLAR](#)

With a peak power output of 610W and bifacial cell technology, this panel achieves an impressive efficiency of 22.6%, allowing for high energy yields even in challenging conditions.



[610W Dual Glass Shingled Solar Panel , High-Power Low ...](#)

High-performance 610W dual glass shingled solar panel featuring low shading loss and enhanced durability, ideal for commercial and utility-scale PV projects.



 LFP 48V 100Ah



Contact Us

For catalog requests, pricing, or partnerships, please visit:

<https://iwap.com.pl>

Phone: +34 919 456 782

Email: info@iwap.com.pl

Scan the QR code to access our WhatsApp.

