



Dimensions and weights of photovoltaic panels





Overview

Standard residential solar panels are typically around 5.5 feet wide and weigh between 40 to 50 pounds. However, the exact dimensions depend heavily on the panel's technology, wattage, and the manufacturer's design. Understanding these specifications is crucial for determining roof. Solar panels come in different sizes and weights, and various factors can impact their dimensions, including total wattage required, solar cell type and solar panel material. Solar cell count: 72-cell solar panels intended for commercial installations are. In 2020, the International Energy Agency (IEA) declared solar power to be the cheapest energy source available and now the option to lower operating costs by using a cheaper form of energy has made solar accessible to businesses of all sizes. By the end, you'll have a clear picture of what to expect when planning a solar project with Solair Green Energy Advisors.



Dimensions and weights of photovoltaic panels

[Standard Solar Panel Sizes And Wattages \(100W-500W Dimensions\)](#)



To bridge that gap of very useful knowledge needed, we have compared and averaged the sizes of 100-watt to 500-watt solar panels available on the market. The goal here is to get to the average solar ...

[The Ultimate Guide to Solar Panel Size, Weight & Wattage \(2025\)](#)

Find the exact solar panel size & weight in our 2025 guide. Our complete chart compares models by ft/cm and lbs/kg to help you plan your installation.

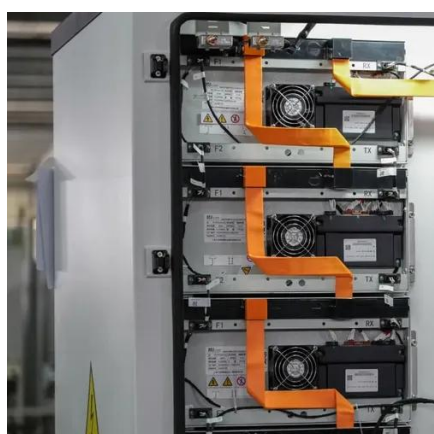


Solar Panels Sizes and Weights (All Sizes)

On average, a solar panel can provide 15 watts per square foot. Let's start by breaking down the average dimensions of different solar panels by size. How Big Is a 100-Watt Solar Panel? A ...

[How Big Are Solar Panels? Solar Panel Size and Weight](#)

In this blog, we'll explain the typical size and weight of solar panels used for homes, businesses, and farms. By the end, you'll have a clear picture of what to expect when planning a ...



[How Big Are Solar Panels? Here's Their Typical Size and Weight](#)

Individual solar panels come in a lot of different shapes and sizes, but generally speaking, they're about 3 feet by 5 feet, or about 15 square feet per panel, according to Pamela Frank, vice

[Solar Panels Size & Weight \(Including Commercial Dimensions\)](#)

Check out this full guide on solar panels size, weight, and other characteristics, including a comparison between Residential and Commercial panels.



[Solar Panel Size And Weight: A Comprehensive Guide](#)

To bridge that gap of very useful knowledge needed, we have compared and averaged the sizes of 100-watt to 500-watt solar panels available on the market. ...



[Solar panel size and weight: everything you need to know](#)



Residential panels are usually made up of 60 PV solar cells, arranged in a 10 by 6 grid pattern. Although exact dimensions vary by manufacturer, home solar panels usually measure about ...

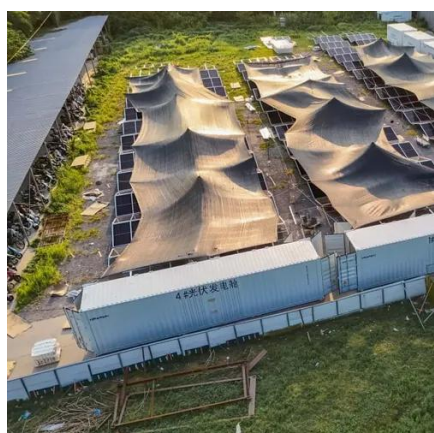


[Solar Panel Size & Dimensions Guide 2025 . Complete Specs](#)

In this comprehensive guide, you'll learn everything you need to know about solar panel sizing, from standard dimensions to weight considerations, helping you determine the perfect solar ...

[Solar Panel Size And Weight: A Comprehensive Guide](#)

Though calculating these dimensions can be difficult, this comprehensive guide will explain the importance of solar panels' size and weight, their role in the installation and their



[Solar Panel Size and Weight: A 2025 Guide \(with Examples\)](#)

Many homeowners do not pay much attention to how the average sizes of solar panels and the weight of the solar panel per watt of the panel can influence the price of installation, the load of the roof and ...



Contact Us

For catalog requests, pricing, or partnerships, please visit:

<https://iwap.com.pl>

Phone: +34 919 456 782

Email: info@iwap.com.pl

Scan the QR code to access our WhatsApp.

