



Design of DC charging energy storage system





Overview

This article conducts a comprehensive review of DCFC station design, optimal sizing, location optimization based on charging/driver behaviour, electric vehicle charging time, cost of charging, and the impact of DC power on fast-charging stations. It is an informative resource that may help states, communities, and other stakeholders plan for EV infrastructure deployment, but it is not intended to be used. The expansion of the DC fast-charging (DCFC) network is expected to accelerate the transition to sustainable transportation by offering drivers additional charging options for longer journeys. However, DCFC places significant stress on the grid, leading to costly system upgrades and high monthly. New EVs have higher ranges and larger battery capacities than their predecessors, necessitating the development of fast DC charging solutions to support quick charging requirements. The idea behind using DC-fast charging with a battery energy storage system (BESS) is to supply the EV from both grid and the battery at the same time. This storage using renewable power generation. This report explains the design, development, and implementation process of an experimental platform for the DC hub. DC. Integrated “solar + storage + charging” (PV + BESS + EV charging) sites succeed or fail on three things: This article walks through a practical, engineering-first approach to design the system and estimate returns—using a method you can adapt to highway fast-charging hubs, commercial depots, retail.



Design of DC charging energy storage system



[DC fast charging stations for electric vehicles: A review](#)

This article conducts a comprehensive review of DCFC station design, optimal sizing, location optimization based on charging/driver behaviour, electric vehicle charging time, cost of charging, and ...

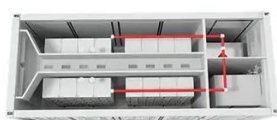
[Battery Energy Storage for Electric Vehicle Charging Stations](#)

When an EV requests power from a battery-buffered direct current fast charging (DCFC) station, the battery energy storage system can discharge stored energy rapidly, providing EV charging at a rate ...



[How to Design an Integrated PV + BESS + EV Charging System](#)

This article walks through a practical, engineering-first approach to design the system and estimate returns--using a method you can adapt to highway fast-charging hubs, commercial ...



[Designing highly efficient, powerful and fast EV charging stations](#)

As the number of electric vehicles (EVs) increase, there is a growing need to create more energy-efficient charging infrastructure systems around the world that can charge vehicles faster than ever ...



Commercial and Industrial ESS

Air Cooling / Liquid Cooling

- Budget Friendly Solution
- Renewable Energy Integration
- Modular Design for Flexible Expansion



DC charging energy storage system design

The current study compiles studies on DC fast charging station design, optimal sizing, location optimization considering charging/driver behaviour, EV charging time, charging cost, and the impact ...

[Optimized ESS Capacity Design in DC Railway Systems Based on the](#)

Semantic Scholar extracted view of "Optimized ESS Capacity Design in DC Railway Systems Based on the Normalized Energy Saving Per Charging-Cycle Index" by Hanmin Lee et al.



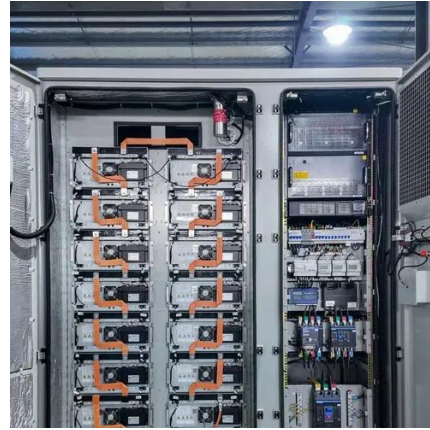
[Modeling and Design of Photovoltaic Storage and Charging DC ...](#)

As an increasingly widely used means of transportation, the number of electric vehicles is increasing rapidly, and the electric vehicle charging station model t

[High-Power Electric Vehicle Charging Hub Integration Platform ...](#)



The eCHIP project addresses the crucial need to design and validate efficient, low-cost, reliable, and interoperable solutions for a DC-coupled charging hub ("DC hub" for short). This report explains the ...





Contact Us

For catalog requests, pricing, or partnerships, please visit:

<https://iwap.com.pl>

Phone: +34 919 456 782

Email: info@iwap.com.pl

Scan the QR code to access our WhatsApp.

