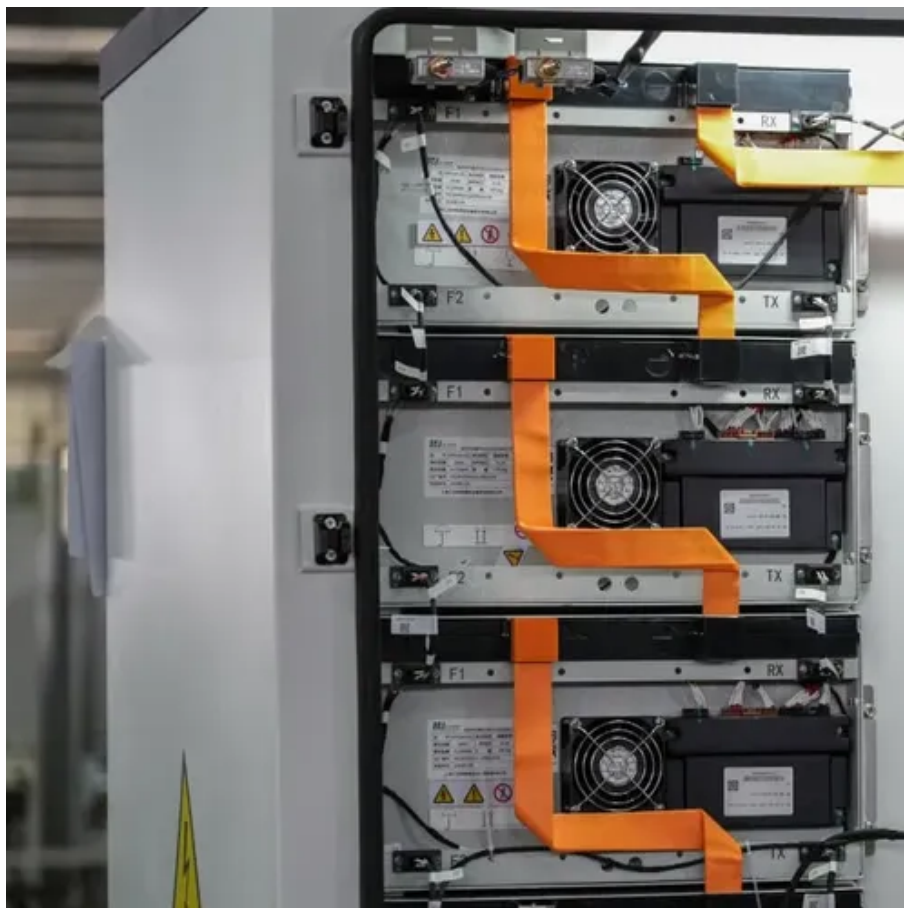




# Communication base station AC power generation process





## Communication base station AC power generation process

---



### [Optimal energy-saving operation strategy of 5G base station with](#)

To further explore the energy-saving potential of 5 G base stations, this paper proposes an energy-saving operation model for 5 G base stations that incorporates communication caching and ...

### [Power supply project for communication base stations](#)

In order to meet the high power and high stability requirements of communication base stations for power supply, this paper designs a dedicated 500W switch power supply for communication base ...

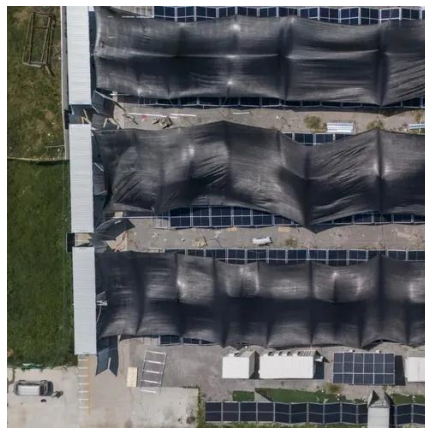


### [What is a Base Station? -- From Communication Core to Thermal ...](#)

How Does a Base Station Work? A base station's operation can be summarized in three steps: wireless transmission, signal conversion, and network connection. First, the base station uses ...

### [Telecom Base Station IoT Energy Monitoring Solution Ethernet ...](#)

Multiple AC sub circuits mainly used for AC power supply of 3-phase loads like "Lighting Power" and 1-phase loads like "Air Conditioner" in base station [AC Power Distribution]



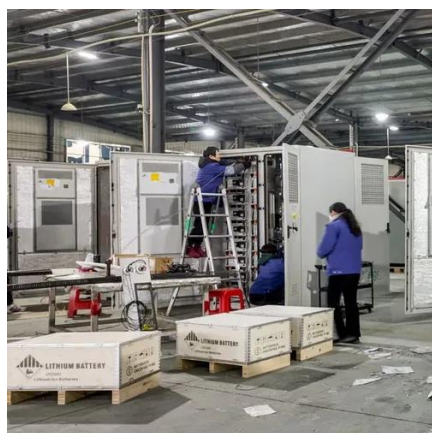
### [Complete Guide to 5G Base Station Construction , Key Steps, ...](#)

Explore how 5G base stations are built--from site planning and cabinet installation to power systems and cooling solutions. Learn the essential components, technologies, and challenges ...



### [Communications System Power Supply Designs](#)

Voice-over-Internet-Protocol (VoIP), Digital Subscriber Line (DSL), and Third-generation (3G) base stations all necessitate varying degrees of complexity in power supply design. We discuss factors ...



### **Base Stations**

Base stations form a key part of modern wireless communication networks because they offer some crucial advantages, such as wide coverage, continuous communications and an array of ...

### [Selecting the Right Supplies for Powering 5G Base Stations](#)



These tools simplify the task of selecting the right power management solutions for these devices and, thereby, provide an optimal power solution for 5G base stations components.



### [A Beginner's Guide to Understanding Telecom Power Supply Systems](#)

The process begins with utility power entering the system, where rectifiers convert alternating current (AC) into direct current (DC). This conversion is essential because most telecom ...

### [Telecommunication base station system working principle and system](#)

After the oil engine is working normally, it can provide AC input power to the rectifier module, which will re supply power to the communication equipment and charge the battery to ...





## Contact Us

---

For catalog requests, pricing, or partnerships, please visit:

<https://iwap.com.pl>

Phone: +34 919 456 782

Email: [info@iwap.com.pl](mailto:info@iwap.com.pl)

Scan the QR code to access our WhatsApp.

