



Commercial solar panel size standards





Overview

Commercial solar panels are specially built around 72-cell modules and larger cells with higher wattages and broader surface mounts. Example: 5kW solar system is comprised of 50 100-watt solar panels. Alright, your roof square footage is 1000 sq ft. Can you put a 5kW solar system on your roof?

For that, you will need to know what size is a typical 100-watt solar panel, right?

To bridge that gap of very useful knowledge needed. Commercial solar panels typically measure approximately 77 inches by 39 inches, but the size can vary depending on the specific model and manufacturer. Their compactness makes them easy to install and maintain. They are generally installed on the rooftops of the houses. Standard Residential Panels Optimize Space and Handling: The industry-standard 60-cell panel dimensions (65" × 39" × 1. You can also find panels with as few as 32 solar cells on recreational vehicles, as well as some larger commercial panels with as many as 96 cells.



Commercial solar panel size standards



[standard solar photovoltaic panel sizes explained](#)

Are commercial solar photovoltaic panel sizes different from residential ones? Absolutely--commercial and utility projects often use larger 72-cell or 96-cell solar photovoltaic panel ...

[Commercial Solar Requirements: Compliance & Installation Standards](#)

Before any panels are installed, commercial solar projects must satisfy a range of technical, legal, and procedural standards. These commercial solar requirements vary based on ...



[Standard Solar Panel Sizes And Wattages \(100W-500W Dimensions\)](#)

That's a 72x39 solar panel; basically, a longer panel, mostly used for commercial solar systems. 96-cell solar panel size. The dimensions of 96-cell solar panels are as follows: 41.5 inches long, and 63 ...

[Solar Panels Size & Weight \(Including Commercial Dimensions\)](#)

Commercial solar panels typically include 72 solar cells and measure up to 6 feet wide (78 inches long by 39 inches wide). As with residential solar panels, commercial models are between ...



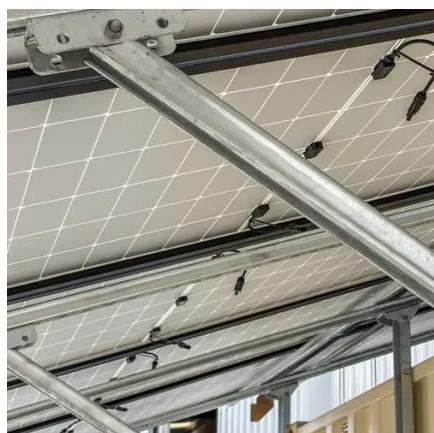
Solar Panel Size: 2026 Detailed Guide

Commercial solar panels are designed for large-scale energy production for factories, solar parks, institutions, and other businesses. Typically, a commercial solar panel is 6.5 x 3.2 feet ...



How Big Are Commercial Solar Panels?

Standard Dimensions: Most commercial solar panels fall within the range of 65 inches by 39 inches (approximately 5.4 feet by 3.25 feet) to 79 inches by 39 inches (approximately 6.6 feet by ...



[What Is a Standard Commercial Solar Panel Size?](#)

Commercial solar panels are generally larger than residential panels due to the need for higher energy output in commercial settings. The most common dimensions for a standard ...

[Size of Solar Panels Explained: Residential and ...](#)



Knowing about the size and solar panel weight is necessary to install effectively and it's performance. Here we explain them in detail.



[Solar Panel Size & Dimensions Guide 2025 . Complete Specs](#)

Complete guide to solar panel sizes and dimensions. Compare 60-cell vs 72-cell panels, weights, roof space requirements, and installation specs for 2025.

[Commercial Solar Panel Sizes: An In-Depth Guide to ...](#)

Discover your perfect fit with our in-depth guide on commercial solar panel sizes. Make informed decisions for your business's eco-friendly shift.





Contact Us

For catalog requests, pricing, or partnerships, please visit:

<https://iwap.com.pl>

Phone: +34 919 456 782

Email: info@iwap.com.pl

Scan the QR code to access our WhatsApp.

