



# Can the locker be designed to lock the door





## Overview

---

A locker lock is designed for one purpose: to keep the door shut until the right person opens it. It's compact to fit thin metal or laminate doors, and can be opened with a key, code, card, or even a user's own padlock. Our combined experience and expertise allow us to continue to innovate, providing custom locking solutions that ensure security and. Acceptable locking arrangements typically require a way for an occupant to release the lock themselves if it is in the path of egress travel. This couldn't be further from the truth. Grid both manufacturers and partners with best-in-class lock brands to give your team options based on budget, functionality, and aesthetics. A padlock features a sturdy steel or metal material that houses a mechanism that keeps the locker closed until someone opens it with a corresponding key. It does not require any combinations or other extensive pieces of technology. A. Wherever the need exists to store items securely by many people, lockers are present.



## Can the locker be designed to lock the door



### [Locker Locks 2026: A Beginner's Guide to Choosing the Right Lock](#)

They are designed to prevent unauthorised access to the lockers and to protect users' belongings. However, with so many locker lock options available, choosing the right one can be ...

### ADA LOCKER GUIDELINES

The locker shelf or hooks cannot exceed 48" from the finished floor. The locker bottom must be a minimum of 15" from the finished floor (an additional shelf can be added to create a false bottom) ...



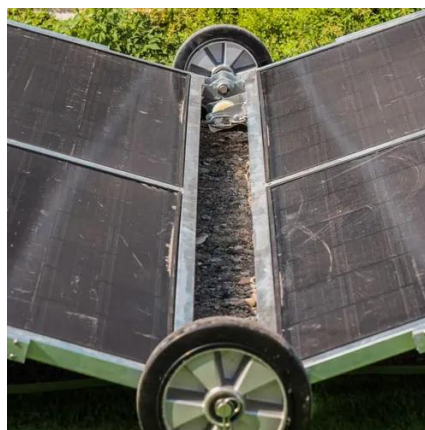
### [Discover the Perfect Locker for Your Security Needs](#)

Clear view doors or plastic faces can be an added security measure. Depending on tier type, clear view lockers come with either a finger pull friction hasp or recessed handle and fingertip ...



### [Top 8 Types of Locks for Lockers \(Security, Durability, Price..\)](#)

The cam will rotate to unlock or lock the door. This lock option is flexible for use in many situations, including for lockers, desk drawers, file cabinets, and anything else with a slim profile.



### [Door Locking Misconceptions in Life Safety Code](#)

There is a misconception that no door can be locked when following the Life Safety Code. This couldn't be further from the truth. Instead, the restrictions are placed on doors in the means of ...



### [A Complete Guide to Locker Lock Types and How They Work](#)

A locker lock is designed for one purpose: to keep the door shut until the right person opens it. It's compact to fit thin metal or laminate doors, and can be opened with a key, code, card, or ...



### [Top 8 Types of Locks for Lockers \(Security, Durability, Price..\)](#)

Keyed Padlock  
Cam Lock  
Combination Lock  
Electronic Combination Lock  
RFID Lock  
Coin Lock  
Coin Return Lock  
Fingerprint Padlock  
A cam lock is like a padlock, but it is integrated into the locker body. The design features a metal plate or cam that rotates when a compatible key is turned inside the body. The cam will rotate to unlock or lock the door. This lock option is flexible for use in many situations, including for lockers, desk drawers, file cabinets, and anything else See more on securitylatest globalspec





## Lockers Selection Guide: Types, Features, Applications ...

The latch mechanism is what physically keeps the locker door closed when the lock is engaged. It often involves a bolt that slides into a hole or loop when the door ...

### Locker Lock Buying Guide

There are 7 main types of locker locks to choose from: Ideal if you are on a budget and don't have large staffing requirements. There is variety within simplicity. Key locks can range from a ...



### [The Different Types of Locker Locks , Lowe & Fletcher USA](#)

Cam locks consist of a housing and barrel unit with the cam attached, which then moves when operated to safely open and close the lock. Providing a user-friendly and durable locking ...

### Locker Locks - Grid

Engineered for a simple, high security solution; Grid's Stainless Steel HS Hasp locker lock is produced with a solid 18-gauge metal face plate and pull. The user engages their padlock with the 3mm thick Z ...



### [Lockers Selection Guide: Types, Features, Applications , GlobalSpec](#)

The latch mechanism is what physically keeps the



locker door closed when the lock is engaged. It often involves a bolt that slides into a hole or loop when the door is closed and the lock is engaged.



## Contact Us

---

For catalog requests, pricing, or partnerships, please visit:

<https://iwap.com.pl>

Phone: +34 919 456 782

Email: [info@iwap.com.pl](mailto:info@iwap.com.pl)

Scan the QR code to access our WhatsApp.

