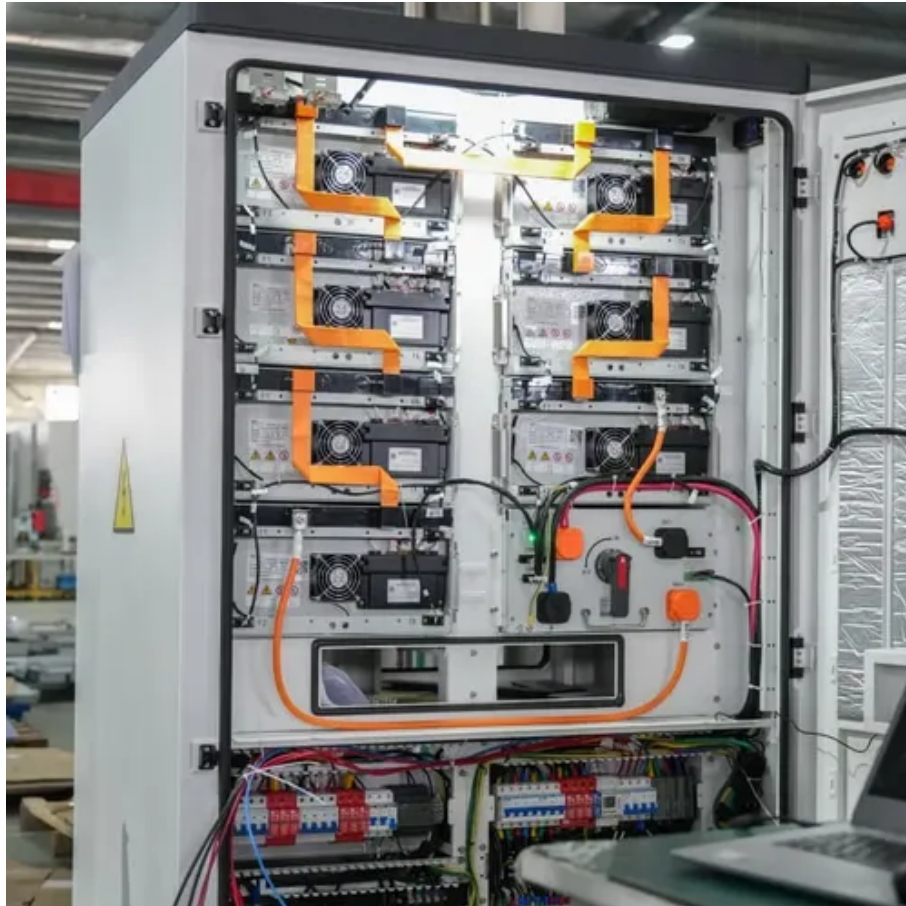




Can the locker accommodate two people





Overview

A single-tier metal locker is a full-height, single-door metal locker for one occupant. Note: Lockers are sold in columns. Each frame has two 9" wide x 12" deep x 62" tall clothing compartments and two top square storage spaces that are 15" wide x 12" deep x 10" tall. Ventilated louvered doors are reinforced for strength and to reduce vibration. One was the normal locker that wasn't quite shoebox sized, but it wasn't much bigger. I did have it all to myself, though. This was shoebox sized, since. The locker has 2 L-shaped compartments, each with a clothing rod so your uniforms, coats, jackets stay wrinkle-free, and still leave ample room for shoes, bags, bottles, sports equipments and other various items. (TIP: Gray doesn't show dirt and grime and is a good choice for environments where dirt can build up.



Can the locker accommodate two people



[2-Tier Metal Locker for Home, Dressing Room, 71 in. Steel L-Shape](#)

Let L-lockers increase your changing room capacity! Our L-shaped, two-door vertical locker is a specially designed space-saving solution that provides the functionality for clothes and items storage, ...

[Frequently Asked Questions for Metal Lockers](#)

Metal lockers come in tiers. A single-tier metal locker is a full-height, single-door metal locker for one occupant. A double-tier metal locker has a door on the bottom and a door on the top for two ...



[How much can you actually fit into your school lockers?](#)

I had a full length locker (taller than me, average height woman) with 2 coat hooks and two shelves - these were shared by two people. It was wide enough to stuff people in, if they weren't more than a ...



Mixed Two Person Interior Metal Lockers

These used, heavy duty, two person lockers accommodate two people in one unit. Each frame has two 9" wide x 12" deep x 62" tall clothing compartments and two top square storage spaces that are 15" ...



Space Saving Lockers

Our space-saving lockers are designed to accommodate two users in the footprint of a single locker, making them the perfect solution for offices, schools, gyms, retail staff rooms, and busy workplaces ...



[2-Tier Metal Locker for Home, Dressing Room, 71 in.](#)

Jul 12, 2023· Let L-lockers increase your changing ...



[3-Wide Two Person Locker 46x18x72, School Lockers](#)

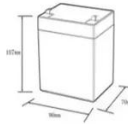
If you need to put a large number of individual lockers in a limited space, these double school lockers are an excellent solution. In approximately the same space that one full-size locker usually takes, ...



MS Lockers



Two Person Lockers, as the name suggests have capacity for two people. Each person benefits from having a long hanging compartment for the storage of garments and a full width compartment for the ...



12.8V6Ah

Nominal voltage (V):12.8
 Nominal capacity (Ah):6
 Rated energy (Wh):76.8
 Maximum charging voltage (V):14.6
 Maximum charging current (A):5
 Floating charge voltage (V):13.6-13.8
 Maximum continuous discharge current (A):10
 Maximum peak discharge current @10 seconds (A):20
 Maximum load power (W):100
 Discharge cut-off voltage (V):10.8
 Charging temperature (°C):0-+50
 Discharge temperature (°C):-20-+60
 Working humidity: <95% R.H (non condensing)
 Number of cycles (25 °C, 0.5c, 100%doD): >2000
 Cell combination mode: 32700-4s1p
 Terminal specification: T2 (5.3mm)
 Protection grade: IP65
 Overall dimension (mm):50*70*107mm
 Reference weight (kg):0.7
 Certification: un38.3/msds



Duplex Two-Person Locker with 6in Legs

Gray TENNSCO Duplex Locker with 7 1/2 x 18 x 72 inch openings provides attractive, durable, secure storage for two people. Each opening features a hat shelf, two single hooks, and removable coat rod.

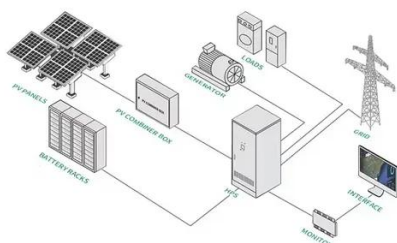
[How to Choose the Right Locker Size for Your Facility: A Complete ...](#)

The ideal locker size depends on the available space, the items to be stored, and the specific needs of your facility. By considering these factors, you can select lockers that maximize storage efficiency ...



[Locker Dimensions: Choosing the Right Sized Locker for Your Space](#)

These are the questions that you need to answer before heading deeper into your locker journey. The important thing is to have big enough lockers to accommodate the students' or ...





Contact Us

For catalog requests, pricing, or partnerships, please visit:

<https://iwap.com.pl>

Phone: +34 919 456 782

Email: info@iwap.com.pl

Scan the QR code to access our WhatsApp.

