



Can the inverter use lithium iron phosphate batteries





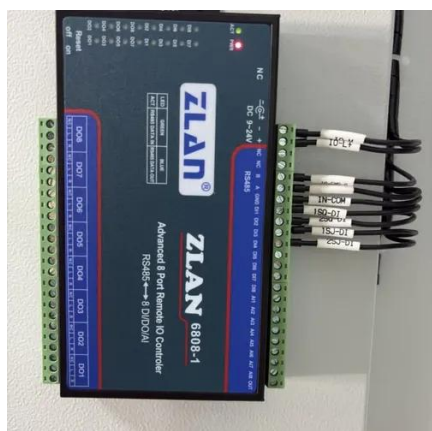
Overview

Yes, you can connect an inverter to a lithium battery. Lithium batteries, particularly Lithium Iron Phosphate (LiFePO₄) batteries, are well-suited for use with inverters due to their high efficiency, lightweight design, and ability to deliver consistent power. However, the compatibility between the inverter and the battery system is essential to ensure proper. When setting up solar energy systems or home energy storage, a common question arises: Are lithium batteries compatible with all inverters?

The short answer is no - proper inverter matching is crucial for optimal performance and safety. Let's examine the key compatibility factors for lithium. Known for their excellent thermal stability and longevity, LiFePO₄ batteries are a reliable choice for both residential and commercial energy storage solutions. Lithium-ion batteries have several advantages. They provide more energy and charge faster.



Can the inverter use lithium iron phosphate batteries



[Compatibility of Lithium-Ion Batteries with Existing Inverters](#)

While many inverters can be adapted to work with lithium-ion batteries, it's essential to check the specifications and compatibility of your particular inverter model.

[Can I Connect Inverter to Lithium Battery?](#)

Yes, you can connect an inverter to a lithium battery. Lithium batteries, particularly Lithium Iron Phosphate (LiFePO₄) batteries, are well-suited for use with inverters due to their high ...



[Compatibility of Lithium-Ion Batteries with Existing ...](#)

While many inverters can be adapted to work with lithium-ion ...

[Can a Lithium Iron Battery Power a 12V Inverter? Compatibility](#)

Lithium iron phosphate (LiFePO₄) batteries are fully compatible with 12V inverters. But how do you optimize performance and avoid common pitfalls? Let's break down the details. Lithium iron ...



[Do Lithium Batteries Need a Special Inverter?](#)

Lithium batteries, including lithium-ion batteries and lithium iron phosphate (LiFePO₄) batteries, don't necessarily require a special inverter specifically designed for lithium batteries.

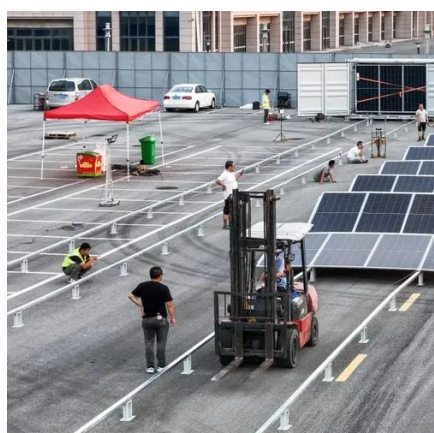
[Can Lithium Batteries Work With Any Type of Inverter?](#)

The short answer is no - proper inverter matching is crucial for optimal performance and safety. Let's examine the key compatibility factors for lithium battery and LiFePO₄ battery systems.



[Do LiFePO₄ batteries need a specific kind of inverter?](#)

I'm a total newbie at this, but I'm trying to decide on a 1000W pure sine wave inverter to pair with my LiFePO₄ battery for my basic solar system for a van. I found a 1000W pure sine wave ...



[How to Choose the Right Inverter for a Lithium Battery System](#)



Lithium battery technologies--especially LiFePO4 (lithium iron phosphate)--have unique electrical characteristics that require careful inverter matching. This guide provides a comprehensive, practical ...



[The Ultimate Guide to Matching Your Lithium Battery and Inverter](#)

To figure out what your inverter is going to demand from the battery, the math is simple:
Inverter Current Draw (Amps) = Inverter Power (Watts) / Battery Voltage (V)



[How to Select the Right Inverter for Your Lithium Battery Pack](#)

You should use an inverter that is specifically designed for or compatible with lithium-ion (Li-ion) or LiFePO4 batteries. These inverters have the correct charging algorithms and ...



[Lithium Battery Combined With Inverter: Key Compatibility Points](#)

Lithium batteries, including lithium-ion batteries and lithium iron phosphate batteries (LiFePO4), do not necessarily need to be paired with a specially designed inverter.



Contact Us

For catalog requests, pricing, or partnerships, please visit:

<https://iwap.com.pl>

Phone: +34 919 456 782

Email: info@iwap.com.pl

Scan the QR code to access our WhatsApp.

