

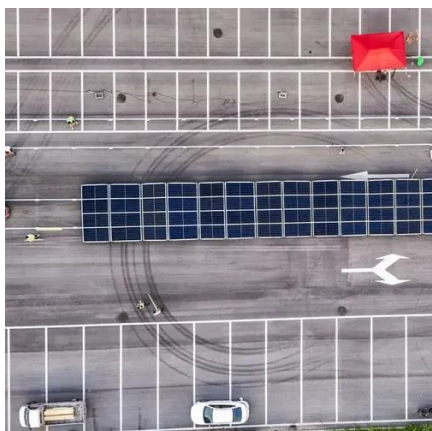


Can solar inverters be directly connected to batteries





Can solar inverters be directly connected to batteries



[Can I Connect an Inverter Directly to a Battery? - ECGSOLAX](#)

Battery paired with inverters provide a versatile solution for powering various devices and appliances. In this guide, we will walk you through the process of connecting an inverter to a ...

[Matching Solar Inverters with Battery Systems: What You Need to Know](#)

In this in-depth guide, we break down everything you need to know about matching solar inverters with battery systems. From understanding different inverter types (string, hybrid, ...



[Connecting the solar panel inverter to the battery](#)

Even though working with electricity can be dangerous, connecting a solar panel inverter to a battery can be a relatively straight process that can easily be performed by homeowners or DIY ...



[How to Connect Battery to Solar Inverter: A Step-by-Step Guide for ...](#)

Unlock the full potential of solar power by mastering the connection between your battery and solar inverter. This comprehensive guide simplifies setup, detailing types of inverters, installation ...



[Can I Attach My Small Inverter Directly to the Battery?](#)

Yes, you can attach a small inverter directly to a battery, but doing it safely requires understanding voltage compatibility, wire sizing, and overload risks. Many DIYers assume it's as ...

[How Inverters Work with Batteries: A Beginner's Complete Guide to](#)

Renewable energy integration allows homeowners and businesses to link solar panels or wind turbines with an inverter and battery system. This setup enables the storage of excess energy ...



[How to Wire Inverter to Battery - No Sparks, Just Power](#)

Wiring an inverter to a battery isn't rocket science--but get it wrong, and you could fry your gear or drain your power fast. This quick guide shows you how to do it safely and efficiently. ...

[Can A Solar Battery Be Used With A Normal Inverter? Compatibility ...](#)



No, a solar battery cannot be used with a normal inverter without additional modifications. Normal inverters are typically designed for direct connection to the grid or for use with ...



[How to connect solar panels to inverter and battery in 3 steps](#)

Use thick battery cables to connect the terminals of a battery and an inverter. Consult the manual for your inverter and check if you need a fuse or a circuit breaker in between an inverter and ...



[Can a 12V Inverter Be Directly Connected to the Battery? A Practical](#)

If you're exploring off-grid power solutions or mobile energy systems, understanding how to connect a 12V inverter directly to a battery is crucial. This guide breaks down the technicalities, safety ...





Contact Us

For catalog requests, pricing, or partnerships, please visit:

<https://iwap.com.pl>

Phone: +34 919 456 782

Email: info@iwap.com.pl

Scan the QR code to access our WhatsApp.

