



# Can a 72v lithium battery be used with an inverter





## Overview

---

For a 72V 200Ah lithium battery system, a pure sine wave inverter is recommended, especially if you plan to power a variety of devices, including sensitive electronics. When setting up solar energy systems or home energy storage, a common question arises: Are lithium batteries compatible with all inverters?

The short answer is no - proper inverter matching is crucial for optimal performance and safety. These include the inverter's voltage, charging algorithm, and overall compatibility with lithium-ion technology. Not all inverters are created equal. Then you go to test it under a real load, and. click.



## Can a 72v lithium battery be used with an inverter

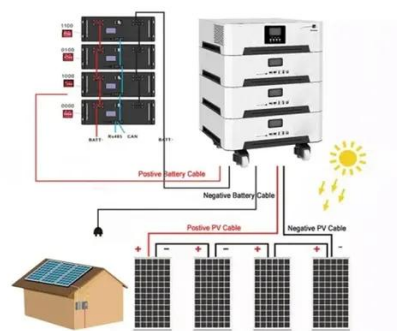


### [Compatibility of Lithium-Ion Batteries with Existing ...](#)

While many inverters can be adapted to work with lithium-ion ...

### [What Size Inverter Do I Need for a 72V 200Ah Lithium Battery?](#)

For a 72V 200Ah lithium battery system, a pure sine wave inverter is recommended, especially if you plan to power a variety of devices, including sensitive electronics.



### [Do I need a special inverter for a lithium battery?](#)

Pro Tip: Always verify the inverter's low-voltage cutoff matches your lithium battery's minimum voltage to prevent BMS-induced shutdowns during use. For example, a 72V lithium system needs an inverter ...



### [How to Choose the Right Inverter for a Lithium Battery System](#)

Choosing the wrong inverter for lithium battery use can lead to inefficiency, system instability, or even battery damage. Unlike lead-acid systems, lithium batteries operate across a different voltage curve, ...



### [Lithium Battery for Inverter: Pros, Specs, and Tips](#)

Can I replace my lead-acid battery with lithium in my inverter system? Yes, but you must ensure your inverter and charger are compatible with lithium charging profiles.



### [Compatibility of Lithium-Ion Batteries with Existing Inverters](#)

While many inverters can be adapted to work with lithium-ion batteries, it's essential to check the specifications and compatibility of your particular inverter model.



### **Can all inverters use lithium batteries?**

Not all inverters are designed to work with lithium batteries, so it's essential to ensure that your chosen inverter can support this type of battery. The first thing you need to check is the ...



### [72V Lithium Battery Inverter: Powering Modern Energy Solutions](#)



Summary: Discover how 72V lithium battery inverters are revolutionizing industries like renewable energy, industrial automation, and electric vehicles. This guide explores their applications, technical ...



### [The Ultimate Guide to Matching Your Lithium Battery and Inverter](#)

Conclusion: With that battery, you can run a 2500W inverter with a healthy safety margin. Its high cycle life and incredibly flat voltage curve mean it's a solid foundation for a powerful system.

### [How to Connect a Lithium Battery to an Inverter:](#)

...

Learn how to connect a lithium battery to an inverter safely and efficiently with step-by-step guidance, and safety precautions for stable power use.



### [Can Lithium Batteries Work With Any Type of Inverter?](#)

The short answer is no - proper inverter matching is crucial for optimal performance and safety. Let's examine the key compatibility factors for lithium battery and LiFePO4 battery systems.



## Contact Us

---

For catalog requests, pricing, or partnerships, please visit:

<https://iwap.com.pl>

Phone: +34 919 456 782

Email: [info@iwap.com.pl](mailto:info@iwap.com.pl)

Scan the QR code to access our WhatsApp.

