



Battery structure principle of communication base station





Overview

Think of a base station's energy storage system as a three-layer cake: 1. The Shape-Shifter (Power Conversion System) This electrical translator converts DC battery power to AC for equipment – like a multilingual diplomat for electrons. Lithium batteries have emerged as a key component in ensuring uninterrupted connectivity, especially in remote or off-grid locations. Understanding how these systems operate is. This article clarifies what communication batteries truly mean in the context of telecom base stations, why these applications have unique requirements, and which battery technologies are suitable for reliable operations. The phrase “communication batteries” is often applied broadly, sometimes. What is the traditional configuration method of a base station battery?

The traditional configuration method of a base station battery comprehensively considers the importance of the 5G base station, reliability of mains, geographical location, long-term development, battery life, and other factors. Simply put, a base station (BS) is a wireless transceiver device in a mobile communication network that provides wireless coverage and communicates with mobile terminals like your phone. Batteries suffer from cycle ageing, or deterioration caused by charge-discharge cycles.



Battery structure principle of communication base station



BATTERY SYSTEM PRINCIPLE OF COMMUNICATION BASE ...

The battery system includes lithium iron phosphate battery module, battery management system and fuse switch for DC short circuit protection and circuit isolation.

Principle and composition of communication base station batteries

Communication base station batteries are advanced energy storage systems designed to provide reliable and uninterrupted power supply to communication base stations.



Base station battery power supply principle

To ensure an uninterrupted and reliable power supply for mobile communication base stations, a mathematical model was developed that comprehensively considers the



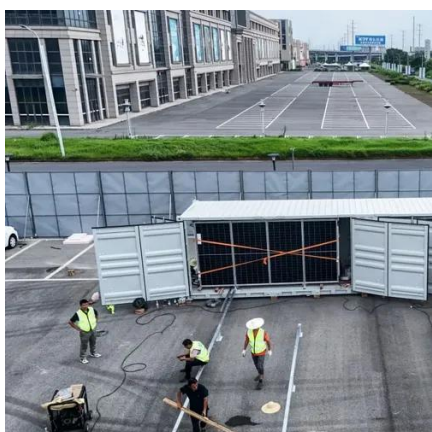
Working Principle of Wireless Communication Base Station ...

The sleep mechanism of a base station refers to the intelligent shutdown of major power consumption devices, such as the AAU of the base station, when there is no load or the load is low, such that the ...



[How Communication Base Station Energy Storage Lithium Battery ...](#)

These batteries store energy, support load balancing, and enhance the resilience of communication infrastructure. Understanding how these systems operate is essential for ...



Base station battery pack principle

Overview Think of a base station's energy storage system as a three-layer cake: 1. The Energy Sponge (Storage Devices) 2. The Shape-Shifter (Power Conversion System) This electrical translator ...



[Communication Batteries: Why Telecom Base Stations Have Unique ...](#)

The phrase "communication batteries" is often applied broadly, sometimes including handheld radios, emergency devices, or general-purpose backup batteries. In practice, when ...



[Battery configuration for communication base station](#)



A GSM (Global System for Mobile Communications) base station, also known as a BTS (Base Transceiver Station), is a critical component in a GSM cellular network.



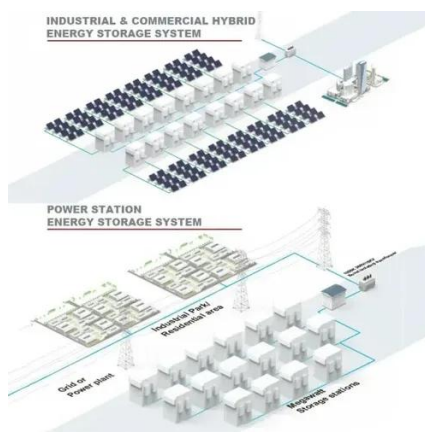
[What is a Base Station? -- From Communication Core to Thermal ...](#)

This article explains the definition, structure, types, and principles of base stations, while highlighting the critical role of thermal interface materials in base station heat management for ...



[Telecom Base Station Backup Power Solution: Design Guide for 48V ...](#)

Designing a 48V 100Ah LiFePO4 battery pack for telecom base stations requires careful consideration of electrical performance, thermal management, safety protections, and compatibility ...





Contact Us

For catalog requests, pricing, or partnerships, please visit:

<https://iwap.com.pl>

Phone: +34 919 456 782

Email: info@iwap.com.pl

Scan the QR code to access our WhatsApp.

