



# Base stations used by domestic communication operators





## Overview

---

Base stations form the backbone of 4G LTE and 5G networks. They transmit radio signals within a set area. Base station (or base radio station, BS) is – according to the International Telecommunication Union 's (ITU) Radio Regulations (RR) [1] – a " land station in the land mobile service. Now that we have a solid. Cell, sector, carrier, and carrier frequency are all concepts related to mobile base stations. They consist of different electronic components and antennas and can be located on masts, on rooftops, or on the outside or inside of buildings.



## Base stations used by domestic communication operators

---



### [Types and Applications of Mobile Communication Base Stations](#)

The construction of mobile communication base stations is an important part of the investment of mobile communication operators, and is generally carried out around factors such as ...

### Types of Base Stations

In this article, we will discuss the different types of base stations with their advantages and applications in the real world. A base station is a component that provides functionality as a gateway ...



### What Is A Base Station?

Base stations play a central role in two-way radio systems, such as citizens band (CB) radio and ham radio. In these setups, the base station serves as a fixed point of communication, ...

### [Mobile Base Stations: Cells, Sectors, Carriers Explained](#)

Cell, sector, carrier, and carrier frequency are all concepts related to mobile base stations. We will start by explaining the base station. A base station, abbreviated BS, is an important ...



LPR Series 19'  
Rack Mounted



### Understanding Base Stations in Mobile Communication

Base stations play a vital role in mobile telecommunications, serving as the intermediaries between cell phones and the broader network infrastructure. Without them, seamless connectivity would not exist. ...

### Base Stations and Cell Towers: The Pillars of Mobile Connectivity

Base stations use antennas mounted on cell towers to send and receive radio signals to and from mobile devices within their coverage area. This communication enables users to make ...



### **ICNIRP , Base Stations**

Base stations are required to enable mobile phone communication, including calls and data transfer. They consist of different electronic components and antennas and can be located on masts, on ...

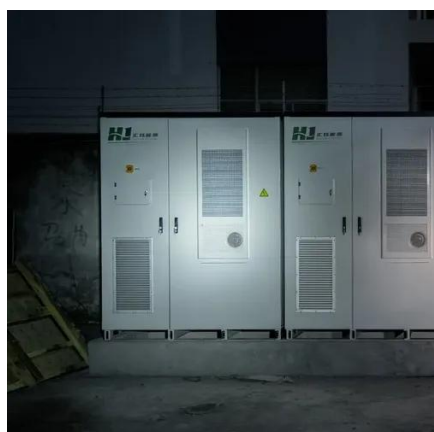


### **Base station**



In traditional wireless communications, it can refer to the hub of a dispatch fleet such as a taxi or delivery fleet, the base of a TETRA network as used by government and emergency services or a CB shack.

114KWh ESS



### What are Base Station in Telecommunications?

Base stations contain several key parts. The antenna sends and receives radio energy. The transceiver handles signal modulation. The baseband processor converts signals to digital form. ...

### The Base Station in Wireless Communications: The Key to Modern

A typical base station has three sectors, which allows for signal coverage of the area around the station. Several dozen or several hundred base stations are connected to the Base ...





## Contact Us

---

For catalog requests, pricing, or partnerships, please visit:

<https://iwap.com.pl>

Phone: +34 919 456 782

Email: [info@iwap.com.pl](mailto:info@iwap.com.pl)

Scan the QR code to access our WhatsApp.

