



Base station single-phase wind power supply





Overview

The wind/PV/storage power supply system for communication base station groups can not only effectively integrate wind and photovoltaic power but also achieve energy scheduling and mutual assistance among various wind/PV/storage power supply systems. The wind/PV/storage power supply system for communication base station groups can not only effectively integrate wind and photovoltaic power but also achieve energy scheduling and mutual assistance among various wind/PV/storage power supply systems. An individual base station with wind/photovoltaic (PV)/storage system exhibits limited scalability, resulting in poor economy and reliability. To address this, a collaborative power supply scheme for communication base station group is proposed. Here we adopt 5kW wind turbine. Its compact design helps save valuable space in the control cabinet and allows for easy, tool-free front wiring using the proven Push-in CAGE CLAMP[®] connection technology. The approach is based on integration of a compr. All systems include comprehensive monitoring and control with remote management capabilities.



Base station single-phase wind power supply



WAGO Power Supply Base

The WAGO Power Supply Base (2587 Series) offers single-phase models with output currents of 5 A, 10 A, and 20 A, efficiently providing 24 VDC to power your application.

[Base station single-phase wind power supply](#)

Control System of 3KW Wind Power Independent Power Supply for 3G Base This paper studies control system operation and control strategy of 3 KW wind power generation for 3G base station.



[Base station wind power supply application](#)

This paper studies structure design and control system of 3 KW wind and solar hybrid power systems for 3G base station. The system merges into 3G base stations to save

[Renewable Energy Sources for Power Supply of Base Station Sites](#)

In this paper, several BS power supply systems that are based on renewable energy sources are presented and discussed.



[Base station single-phase wind power supply power supply](#)

Latest developments in solar PV technology, energy storage advancements, commercial power solutions, and industry insights from our team of renewable energy experts across Poland.



[Research on Capacity Optimization Configuration of Wind/PV](#)

An individual base station with wind/photovoltaic (PV)/storage system exhibits limited scalability, resulting in poor economy and reliability. To address this, a collaborative power supply ...



[Design of 3KW Wind and Solar Hybrid Independent Power Supply ...](#)

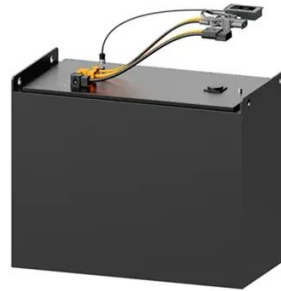
This paper studies structure design and control system of 3 KW wind and solar hybrid power systems for 3G base station. The system merges into 3G base stations to save power in order ...



[China Professional Designed Solar Wind Generator Bts Station ...](#)



Here we adopt 5kW wind turbine together with 5kW solar module as the new energy power supply system, it can fully meet the need of those small base station for 24 hours continuous working.



[Control System of 3KW Wind Power Independent Power Supply for ...](#)

This paper studies control system operation and control strategy of 3KW wind power generation for 3G base station. The system merges into 3G base stations to save power in order to fully ensure that ...

[Optimal sizing of photovoltaic-wind-diesel-battery power supply for_](#)

Having all the above facts in mind, the main idea of this paper is therefore to theoretically describe and software implement a novel planning tool for optimal sizing of standalone PV-wind ...





Contact Us

For catalog requests, pricing, or partnerships, please visit:

<https://iwap.com.pl>

Phone: +34 919 456 782

Email: info@iwap.com.pl

Scan the QR code to access our WhatsApp.

