



Base station power supply layout





Overview

Find the perfect block diagram with our step-by-step guide below. Start by choosing a solution, then refine your selection as the next fields adapt dynamically to lead you to the final diagram. For 5G, infrastructure OEMs are considering combining the radio, power amplifier and. As a result, a variety of state-of-the-art power supplies are required to power 5G base station components. Modern FPGAs and processors are built using advanced nanometer processes because they often perform calculations at fast speeds using low voltages (<0.9 V) at high current from compact. Outdoor base stations integrate all essential systems into a single Integrated Cabinet, designed to endure harsh conditions like direct sunlight, rain, and extreme temperatures. These units protect the equipment while ensuring efficient functionality. Power factor corrected (PFC) AC/DC power supplies with load sharing and redundancy (N+1) at the front-end feed dense, high efficiency DC/DC modules and point-of-load converters on the back-end. Tech ttery chargers, and distribution equipment.



Base station power supply layout



[Base station power supply design standards](#)

A preferred power supply architecture for DSL applications is illustrated in Fig. 2. A push-pull converter is used to convert the 48V input voltage to +/-12V and to provide electrical isolation. Synchronous buck ...

[Communications System Power Supply Designs](#)

Unique solutions for DSL, VoIP and 3G Base Stations illustrate the wide range of power system architectures and the opportunities available for higher level integration.



[Research on Design of Switching Power Supply Based on Mobile ...](#)

According to the special environment and requirement of base station communication power supply, by using corresponding circuit control analysis and heat dissipation design, two double-pipe

Base Station Power Supply , onsemi

Find the perfect block diagram with our step-by-step guide below. Start by choosing a solution, then refine your selection as the next fields adapt dynamically to lead you to the final ...



[Building better power supplies for 5G base stations](#)

Building better power supplies for 5G base stations Authored by: Alessandro Pevere, and Francesco Di Domenico, both at Infineon Technologies Infineon Technologies - Technical Article 2022



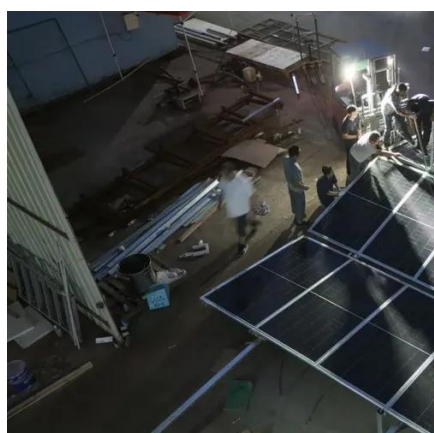
[The power supply design considerations for 5G base stations](#)

To understand how, consider the power amplifier (PA) and power supply unit (PSU) in the 5G New Radio (NR) gNodeB base station. In 2G, 3G and 4G, the PA and PSU were separate ...



[Optimum sizing and configuration of electrical system for](#)

This study develops a mathematical model and investigates an optimization approach for optimal sizing and deployment of solar photovoltaic (PV), battery bank storage and a diesel ...



[The Road to Robust 5G: A Deep Dive into Base Station Power Supply](#)



Explore key challenges and strategies to achieve robust power supply reliability in modern industrial and telecom applications.



[Complete Guide to 5G Base Station Construction , Key Steps, ...](#)

Explore how 5G base stations are built--from site planning and cabinet installation to power systems and cooling solutions. Learn the essential components, technologies, and challenges ...



[Selecting the Right Supplies for Powering 5G Base Stations](#)

These tools simplify the task of selecting the right power management solutions for these devices and, thereby, provide an optimal power solution for 5G base stations components.





Contact Us

For catalog requests, pricing, or partnerships, please visit:

<https://iwap.com.pl>

Phone: +34 919 456 782

Email: info@iwap.com.pl

Scan the QR code to access our WhatsApp.

