



# Base station power cabinet battery setting rules





## Overview

---

For a two battery system, you must have 15 feet of total working space. Conduit runs from the battery to the meter, and Base cannot perform any trenching or attic conduit runs. Should be placed within 1 foot of the wall. The Base installation team tailors configurations to specific site layouts, ensuring efficiency and compliance. Typically, the Base Power system is installed near. Minimum clearances must be maintained between the cabinets and surrounding building parts/cabinet to accommodate the installation and maintenance of the base station. The following constraints must be considered for cabinet clearances: In line-ups where battery back-up cabinets may be needed, the. Ensure the battery cabinet is in standby mode. The previous code language gave a general requirement for ventilation.



## Base station power cabinet battery setting rules

---



### [Battery Energy Storage Systems: Main Considerations for Safe](#)

This webpage includes information from first responder and industry guidance as well as background information on battery energy storage systems (challenges & fires), BESS installation ...

### Setting up a base unit

Get a LiFePO4 battery for the base station to keep that up and running for a while. Or put solar on it and let it self charge to keep it up and running longer.



### [Base station power cabinet battery settings](#)

This guide covers everything you need to know about how your Base battery operates, protects your home, and supports the power grid. You'll also find answers to common battery myths and top tips to ...

### Equipment layout and clearances

Clearances This table below lists minimum clearances for indoor primary and power cabinets to an adjacent building or parts/cabinets.

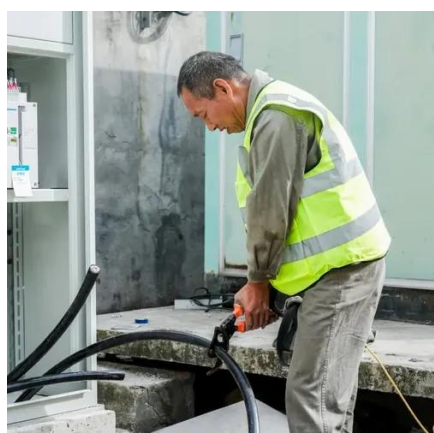


### 480.9 Battery Locations.

Working space shall be measured from the edge of the battery cabinet, racks, or trays. For battery racks, there shall be a minimum clearance of 25 mm (1 in.) between a cell container and any wall or ...

### Battery cabinet

This user manual contains guidelines to install the battery cabinet and it is intended for people who plan the installation, install, commission and use or service the battery cabinet.



### [LLVD & BLVD in Base Station Power Cabinets](#)

It is hoped that this article will help readers fully understand the importance of LLVD and BLVD in base station power cabinets and provide references for practical applications.

**Where can the battery system be installed?  
What are the electrical ...**



Must be at least 3 feet apart from each other and any windows, doors, or gas meters. That means, for one battery system, you must have 9 feet of total working space. For a two battery system, you must ...



### [How to connect the battery cabinet communication base station ...](#)

Overview What is a base station power cabinet? The base station power cabinet is a key equipment ensuring continuous power supply to base station devices, with LLVD (Load Low Voltage ...

### [BATTERY ROOM REGULATIONS AND SAFETY BY: BOB ...](#)

IEEE-485 "Recommended Practice for Sizing Large Lead Storage Batteries for Generating Stations and Substations" This particular section defines loads and duty cycle, and details the sizing of large ...





## Contact Us

---

For catalog requests, pricing, or partnerships, please visit:

<https://iwap.com.pl>

Phone: +34 919 456 782

Email: [info@iwap.com.pl](mailto:info@iwap.com.pl)

Scan the QR code to access our WhatsApp.

