



# Base station communication room maintenance





## Overview

---

While daily inspections help, periodic deep cleaning and component checks are essential for comprehensive radio equipment maintenance. Software Updates: Keep firmware up to date for optimal. Did you know a single communication base station failure can disrupt services for 5,000+ users?

As global 5G deployments accelerate - with over 7 million base stations projected by 2025 - operators face mounting maintenance challenges. Regular radio equipment maintenance isn't just about prolonging device life—it's about preserving clear communication when you need it most. The following factors explain why reliable backup power is indispensable: Grid instability and remote deployments: Many sites. Remote monitoring and control of the cooling system is vital to ensure the working condition of the machines distributed in different base stations. In this regard, the maintenance personnel need to have certain professional skills.



## Base station communication room maintenance

---



### [Communication Batteries: Why Telecom Base Stations Have Unique ...](#)

The phrase "communication batteries" is often applied broadly, sometimes including handheld radios, emergency devices, or general-purpose backup batteries. In practice, when ...

### [Maintaining Your Radio Equipment: Essential Care & Upkeep Tips](#)

Your radio equipment--whether handheld transceivers, base stations, or repeaters--needs regular care to remain functional and effective. In this guide, we'll explore key ...



### [Six Steps to Maintain Cellular Communication Systems](#)

Learn how to perform routine maintenance on cellular communication systems using basic tools and techniques. Improve signal quality, performance, and reliability.

### [Mobile communication base station power supply equipment ...](#)

The purpose of its maintenance work is to ensure that the communication equipment has continuous, stable, reliable energy, providing a normal operation of the communication device to ensure the ...



### Mobile Communication Base Stations

Base stations are distributed over a wide range of areas (covering urban, mountainous, rural, coastal, and desert environments). Some sites are located in remote locations and face harsh environments, ...

### [Physical Security Standards and Best Practices in the](#)

High-quality, tamper-proof locks are typically required for all access points to the base station and equipment rooms. These locks should be able to withstand attempts at forced entry, picking, or ...



### [Selection and maintenance of battery for communication base station](#)

Focused on the engineering applications of batteries in the communication stations, this paper introduces the selections, installations and maintenances of batteries for communication stations, ...

### [Base Station Installation & Maintenance Test Solutions](#)



Anritsu provides solutions for performance checking during base station installation as well as for maintenance.



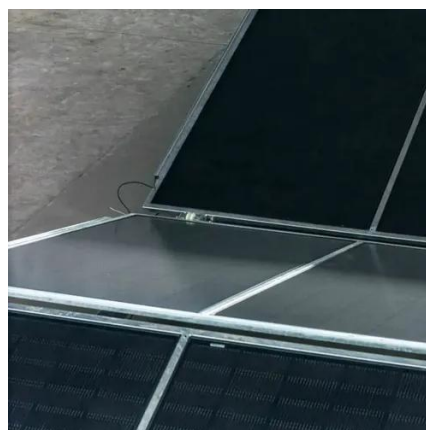
### [Cooling for Mobile Base Stations and Cell Towers](#)

Cooling below ambient is necessary to extend the life of back-up batteries, and temperature stabilization is required to maintain peak performance. Many base stations and cell phone towers are found in ...



### [Communication Base Station Maintenance Guide](#), [Huijue Group E-Site](#)

Did you know a single communication base station failure can disrupt services for 5,000+ users? As global 5G deployments accelerate - with over 7 million base stations projected by 2025 - operators ...





## Contact Us

---

For catalog requests, pricing, or partnerships, please visit:

<https://iwap.com.pl>

Phone: +34 919 456 782

Email: [info@iwap.com.pl](mailto:info@iwap.com.pl)

Scan the QR code to access our WhatsApp.

