



Base station backup battery





Overview

Lithium-ion batteries last longer and work better than lead-acid ones for telecom use. Pick the best battery type. 5¢/kWh Base charge + standard utility delivery charges) All-in rate (includes 8. Because they must operate around the clock, uninterrupted power is not optional—it is mission critical. Power outages caused by grid instability, storms. Securing backup power for telecom base stations involves several critical components, each of which plays a role in ensuring system integrity. Batteries are a core element of any backup power strategy. High-capacity batteries ensure. When natural disasters cut off power grids, when extreme weather threatens power supply safety, our communication backup power system with intelligent charge/discharge management and military-grade protection becomes the "second lifeline" for base station equipment.



Base station backup battery

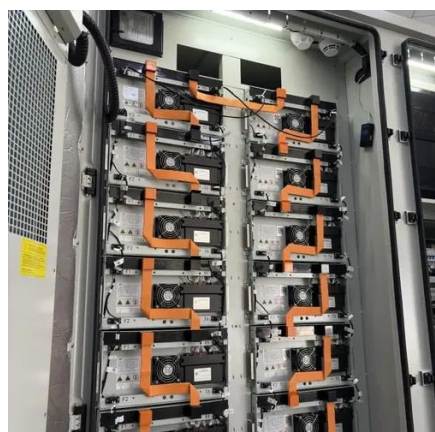


[Communication Batteries: Why Telecom Base Stations Have Unique ...](#)

The phrase "communication batteries" is often applied broadly, sometimes including handheld radios, emergency devices, or general-purpose backup batteries. In practice, when ...

[How to Select the Best ESTEL Battery Backup for Base Stations](#)

Choose the best telecom battery backup systems by evaluating capacity, battery type, environmental adaptability, maintenance, and scalability for base stations.



[Base Power Battery & Energy Plans and Pricing . Base ...](#)

Get a clear, no-surprises energy plan with Base Power. Guaranteed below-market electricity rates, no hidden fees--plus built-in home backup for ultimate reliability.

[Telecom Battery Backup System . Sunwoda Energy](#)

A telecom battery backup system is a comprehensive portfolio of energy storage batteries used as backup power for base stations to ensure a reliable and stable power supply.



[How to Choose the Right Backup Battery for Telecom Base Stations](#)

Choosing the right telecom base station backup battery is a strategic decision that goes beyond upfront cost. Operators must weigh factors such as voltage requirements, cycle life, ...



[Telecom Base Station Backup Power Solution: Design Guide for 48V ...](#)

Discover the 48V 100Ah LiFePO4 battery pack for telecom base stations: safe, long-lasting, and eco-friendly. Optimize reliability with our design guide.



[Communication Base Station Backup Battery](#)

When natural disasters cut off power grids, when extreme weather threatens power supply safety, our communication backup power system with intelligent charge/discharge management and military ...

- LIQUID/AIR COOLING
- INTELLIGENT INTEGRATION
- PROTECTION IP54/IP55
- BATTERY /6000 CYCLES



[Securing Backup Power for Telecom Base Stations - legend](#)



This article will explore in detail how to secure backup power for telecom base stations, discussing the components involved, advanced technologies, best practices, and future trends to ...



[Understanding Backup Battery Requirements for Telecom Base Stations](#)

Telecom base stations require reliable backup power to ensure uninterrupted communication services. Selecting the right backup battery is crucial for network stability and efficiency.

[Telecom Backup Battery Upgrade: ONESUN's Zero-Downtime Power ...](#)

The ONESUN telecom backup battery solution targets the three critical needs of zero downtime, high reliability, and low maintenance, delivering a fully executable and practical protection ...





Contact Us

For catalog requests, pricing, or partnerships, please visit:

<https://iwap.com.pl>

Phone: +34 919 456 782

Email: info@iwap.com.pl

Scan the QR code to access our WhatsApp.

