



Are communication base stations electromagnetic waves





Overview

Radio waves transfer radiofrequency (RF) electromagnetic energy (EME). Radio and television broadcasting, mobile phones and their base stations, smart meters and satellite communications all produce RF EME. Cell phone towers are still relatively new, and many people are understandably concerned about whether the RF waves they give off might possibly have health effects. The strength of the radio waves from base station antennas reduces rapidly with increasing distance and the levels at locations where the public can be exposed. Electromagnetic radiation is made up of energy waves generated by the oscillation of electromagnetic fields as they travel through space. This sort of radiation has several different wavelengths, including radio waves, microwaves, infrared, visible light, ultraviolet, X-rays, and gamma rays. Throughout the world, the rollout of 5G networks is either.



Are communication base stations electromagnetic waves

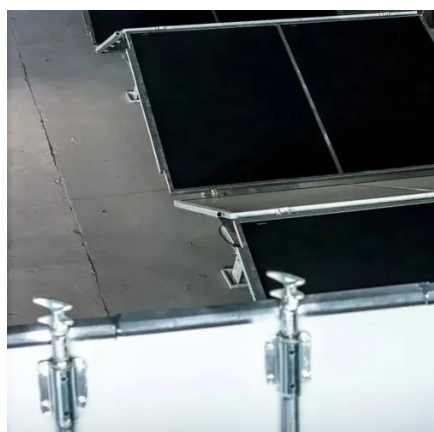


[Mobile phone base stations: radio waves and health](#)

A mobile phone transmits and receives electromagnetic radiation, specifically radio frequency (RF) waves. When a mobile device is turned on, it ...

[5G, human exposure to electromagnetic fields \(EMF\) and health](#)

Despite extensive studies into the health effects of mobile phones and base stations over the last two or three decades, there is no indication of an increased health risk when exposed to electromagnetic ...



[Mobile phone and base stations radiation and its effects on human](#)

All mobile phones emit a type of radiation known as electromagnetic field (EMF), which consists of waves of electrical and magnetic energy travelling together through atmosphere.

[Workgroup Report: Base Stations and Wireless ...](#)

Despite unavoidable uncertainty, current scientific data are consistent with the conclusion that public exposures to permissible RF levels from mobile telephony and base stations are not likely to ...



[Accurately assessing EMF exposure from 5G](#)

This white paper provides information related to human exposure to radio frequency electromagnetic fields (RF EMF) from the base stations in the new 5G networks and describes how to accurately ...

[How Do Cell Phone Use Electromagnetic Radiation?](#)

A mobile phone transmits and receives electromagnetic radiation, specifically radio frequency (RF) waves. When a mobile device is turned on, it continuously releases RF energy, which ...



[Sources that emit radio waves frequently asked questions](#)

Radio waves transfer radiofrequency (RF) electromagnetic energy (EME). Radio waves are mainly used for telecommunications purposes. Radio and television broadcasting, mobile phones and their base ...



[A study on the ambient electromagnetic radiation level of 5G base](#)



Knowledge of the electromagnetic radiation characteristics of 5G base stations under different circumstances is useful for risk prevention, assessment, and management.

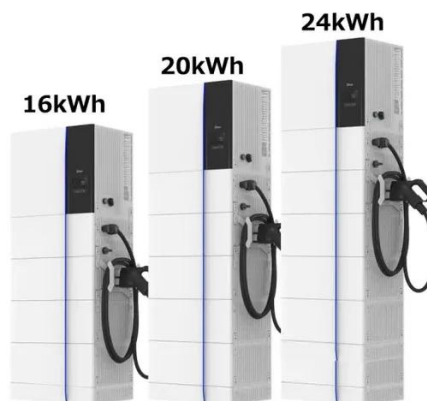


Radiation and health

While no health effects are expected from exposure to RF fields from base stations and wireless networks, research is still being promoted by WHO to determine whether there are any health ...

Mobile phone base stations: radio waves and health

The radio waves transmitted by base stations are radiofrequency electromagnetic fields (EMFs), a form of non-ionising radiation, and have frequencies in the microwave region of the



Do Cell Phone Towers Cause Cancer? , American Cancer Society

Base stations are usually from 50 to 200 feet high. Cell phones communicate with nearby cell towers mainly through RF waves, a form of energy in the electromagnetic spectrum between FM radio ...



Contact Us

For catalog requests, pricing, or partnerships, please visit:

<https://iwap.com.pl>

Phone: +34 919 456 782

Email: info@iwap.com.pl

Scan the QR code to access our WhatsApp.

