



Aluminum alloy edge clamp for photovoltaic panels





Aluminum alloy edge clamp for photovoltaic panels



Amazon : Solar Panel Clamps

Anbte 10pcs Solar Panel End Clamp for Standard Unistrut, Aluminum 30mm/35mm Solar Panel Brackets with Nuts Bolts, Solar Panel Mounting Kit for Metal Roof, Tin Roof, Flat Roof, Sheet Roof, ...

[Solar Panel Edge Clamp - Anodized Aluminum-Topfence ...](#)

This specific clamp model is designed to work with C-channel carbon steel rails, offering a robust and secure fixation for framed solar panels. The end clamp is made from anodized aluminum alloy, ...



Custom Aluminum Solar Panel End Clamps

Made from high-quality aluminum alloy, these clamps are lightweight, corrosion-resistant, and exceptionally strong, making them indispensable in solar panel installation systems.

[Solar Panel End Clamps . Secure & Durable PV ...](#)

Discover the best solar panel end clamps -- high-strength, corrosion-resistant, and easy to install. Learn how to choose end clamps.



[Solar Panel Adjustable Bracket Clamp Wide Photovoltaic Support ...](#)

Product details Feature: *Brand new and high quality *Suitable for 30mm/35mm thick solar modules *Color: Black Galvanic Process Wear Resistant *Material: aluminum alloy AL6005-T5 nimM8*25 ...



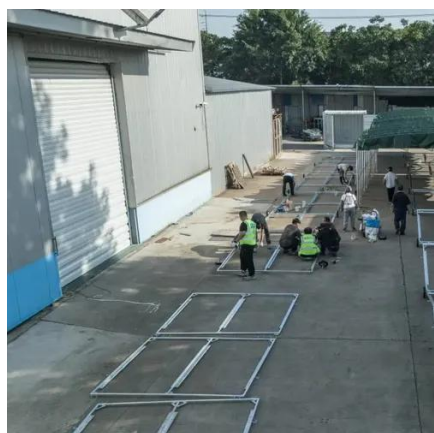
[Solar Panel End Clamps Edge Clamps . ACCESSORIES , Super ...](#)

Available in multiple sizes and finishes, these clamps are compatible with a wide range of panel frame thicknesses, offering flexibility for residential, commercial, and utility-scale solar projects.



[Universal Solar Panel End Clamp , Terminal Edge Mounting Clamp](#)

The Universal Solar Panel End Clamp delivers professional-grade edge mounting solutions for securing the outer panels of solar arrays. Engineered from premium aluminum, these terminal clamps ensure ...



[Photovoltaic Mount End Clamp for Solar Panel - HAILIANG](#)



Photovoltaic (PV) Mount End Clamps are critical components in solar panel mounting structures, specifically designed to secure the outermost solar panels in an array. Made typically from high ...



[10 Pcs Aluminum Solar Panel End Clamps Mounting Hardware Kit PV ...](#)

Versatile Application: Compatible with various roof types including metal, tile, and flat surfaces, these 10-piece end clamp kits work with standard solar panel frames, making them suitable ...

[Anodized Aluminum Solar Edge Clamp - 30-40mm Panel, RT-40 Rail ...](#)

Our Solar Panel Edge Clamp (3.5×60) is a high-strength aluminum alloy clamp designed for securing solar panels to RT-40 rails in roof, ground-mounted, and solar carport systems.





Contact Us

For catalog requests, pricing, or partnerships, please visit:

<https://iwap.com.pl>

Phone: +34 919 456 782

Email: info@iwap.com.pl

Scan the QR code to access our WhatsApp.

