



685W photovoltaic panel size specifications





Overview

The size is 20mm x 20mm, and it's anti-PID (Preventive Installation Damage) designed for reliable performance. IP68 water-resistant junction box with optional 4mm² cable and MC4 connectors. With a sleek design available in full black or.

Large Solar Panels Mono 650W 660W 680W 685W Half Cut 132Cells
Monocrystalline PV Specification of 210*210mm Half Cut Solar Panel
Monocrystalline Production of 680W Half Cut Half Cells Solar Panel (210*210mm)
Package for Half-cut Solar Panel 31units half-cut cells solar panel in one wood pallet 8. SAKO 685W-705W PV module with 10bb half-cut mono Perc cell technology with multi bus-bar design, improved cells efficiency and get higher output power. The module efficiency up to 21. The module generates additional power from ground reflection on the backside, making it ideal for maximizing available area and reducing. Bifacial Solar Panel | 685Wp | 39. 10% | 2384x1303x33/35 mm | 40HQ: 594 / 558 Pieces GRANKIA GT685W-132M high efficiency topcon bifacial solar module 685w is optimized for both residential and commercial solar applications, providing superior energy generation and long-term reliability.



685W photovoltaic panel size specifications

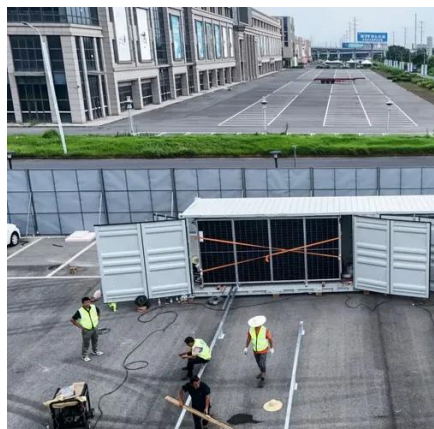


[Canadian Solar 685W Solar Panel 132 Cells Bifacial CS7N](#)

The solar cells of CS7N-685TB-AG are half the size of those found in standard panels. Major advantages include reduced power consumption, extended life and enhanced efficiency in low ...

[Large Solar Panels Mono 650W 660W 680W 685W Half Cut 132Cells](#)

Large Solar Panels Mono 650W 660W 680W 685W Half Cut 132Cells Monocrystalline PV. Specification of 210*210mm Half Cut Solar Panel Monocrystalline. Production of 680W Half Cut Half Cells Solar ...



[685-700 Watt Monocrystalline Bifacial Solar Panel](#)

Our monocrystalline bifacial solar panels are designed to deliver exceptional performance and efficiency. With a power output ranging from 685 to 700 watts.

[Solar Panel Bifacial Half-cut Monocrystalline 685 Wp](#)

SOLAR PANEL 685 WATTS , TRINA SOLAR , Bifacial Half-cut , Monocrystalline , 132 Cells PV Module , Power tolerance 0/+5W , L 2384 mm, W 1303 mm, D 33 mm , 38.30 kg , Material Warranty 12 years , ...



[Greensun 685W Solar Panel \(655-685Watt\) - TSolar](#)

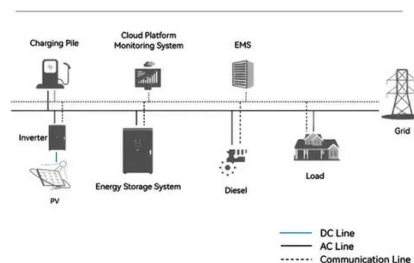
The Greensun 685W Solar Panel is a high-performance monocrystalline module designed for both commercial and residential applications. Featuring 132 half-cut PERC cells (210mm x 210mm), this ...



[685 photovoltaic panel size specifications](#)

The most important solar panel specifications include the short-circuit current, the open-circuit voltage, the output voltage, current, and rated power at 1,000 W/m² solar radiation, all

System Topology



[GT685W-132M high efficiency topcon bifacial solar module 685w](#)

Thanks to its bifacial design, the TOPCon solar module 685w can capture sunlight from both the front and rear sides of the module. This allows the panel to generate additional power by utilizing reflected ...



[Mate Solar , MT6 660-685W-66H , Solar Panel Datasheet , ENF ...](#)



Mate Solar Co., Ltd. Solar Panel Series MT6 660-685W-66H. Detailed profile including pictures, certification details and manufacturer PDF.



[Neptune Series 660-685W N-TOPCon , BIFACIAL ...](#)

RALOS PV Modules are manufactured with the highest quality materials and features best in performance. Our modules deliver high PV yield.

[SAKO 685W-705W high efficiency PV module adopting 132 Mono per ...](#)

SAKO 685W-705W PV module with 10bb half-cut mono Perc cell technology with multi bus-bar design, improved cells efficiency and get higher output power. The module efficiency up to 21.3%.





Contact Us

For catalog requests, pricing, or partnerships, please visit:

<https://iwap.com.pl>

Phone: +34 919 456 782

Email: info@iwap.com.pl

Scan the QR code to access our WhatsApp.

