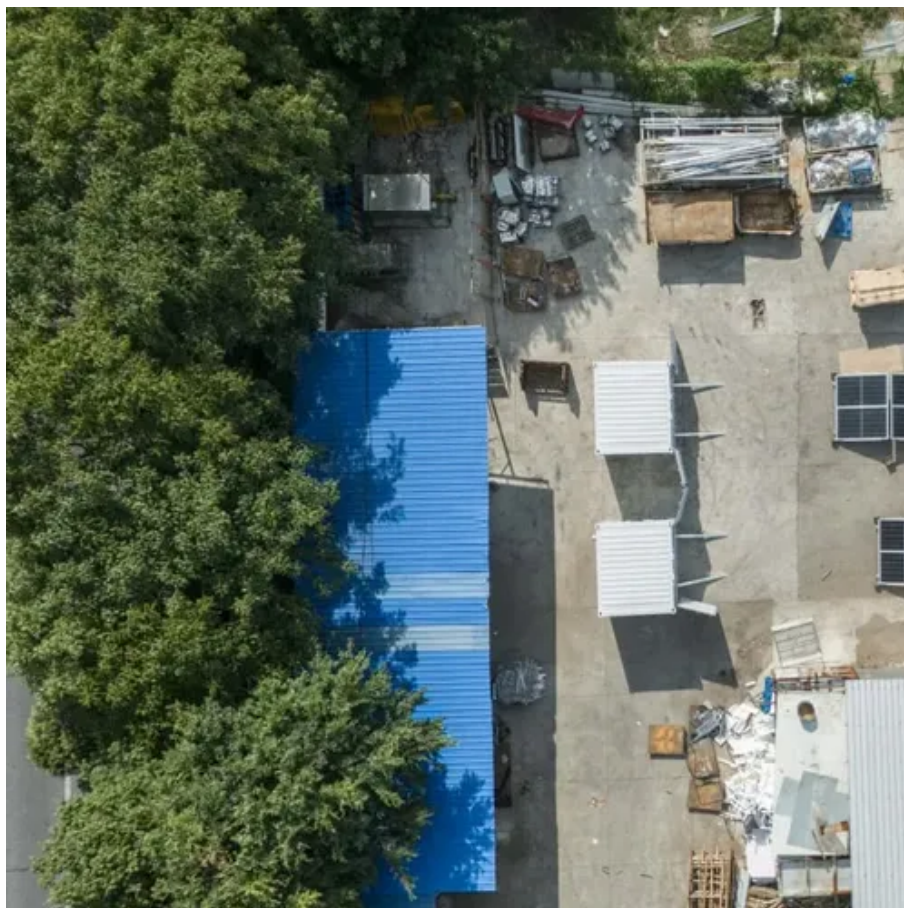




60w photovoltaic panel size specifications





Overview

The dimensions of a 60W solar panel can vary slightly depending on the manufacturer and specific design, but 1. the typical size is approximately 47 inches by 21 inches (119 cm by 53 cm), 2. they are suitable for small. Doing Solar Differently . Reliable quality leads to a better sustainability even in harsh environment like desert, farm and coastline. High module conversion efficiency (up to 15.44 %), through innovative manufacturing technology. Advanced glass and solar cell surface texturing allow for excellent performance in low-light. Standard Residential Panels Optimize Space and Handling: The industry-standard 60-cell panel dimensions (65" × 39" × 1. That's basically a 66×39 solar panel. But what is the wattage?

That is unfortunately not listed at all.



60w photovoltaic panel size specifications



[Monocrystalline Solar Panel 60W PMS60W Datasheet](#)

Certified to withstand: wind load (2400 Pascal) and snow load (5400 Pascal). Impedance matching technology eliminates mismatch losses, more power from each module bin. * Remarks: Products ...

60M G1 All Black Module

FOR 1500V PRODUCTS, EDGE SPACING (LIVE PARTS TO THE ACCESSIBLE EDGE OF THE MODULE) Circuit Current I_{sc} NEEDS (A) TO BE MORE THAN 15MM. FOR 1000V PRODUCTS, ...



SBM 60W Solar Panel Specifications

Doing Solar Differently.



[Solar Panel Size & Dimensions Guide 2025. Complete Specs](#)

Complete guide to solar panel sizes and dimensions. Compare 60-cell vs 72-cell panels, weights, roof space requirements, and installation specs for 2025.



What is the size of a 60w solar panel?

Generally, a 60W solar panel tends to measure approximately 47 inches by 21 inches (119 cm by 53 cm). These dimensions may fluctuate slightly based on the specific manufacturer or model.



60W Solar panel specifications

60W Solar panel specifications Our range of solar panels are constructed from ultra-efficient polycrystalline and have been designed to provide a reliable and cost-effective alternative energy ...



Mono-Crystalline 60W Solar Panel

Technical parameter Maximum Power(W) 60W Optimum Power Voltage(Vmp) 18.46V Optimum Operating Current(Imp) 3.25A Open Circuit Voltage(Voc) 22.51V Short Circuit Current(Isc) 3.57A ...



60W Foldable Solar Panel (F16-3600)



The 60W Foldable Solar Panel is compact, flexible, lightweight, and incredibly durable. Ideal for charging 12V devices and smaller USB-enabled electronics.



[60W Monocrystalline 24V Solar Panel w/ Great Efficiency -Newpowa](#)

Newpowa's New 60W 24V Monocrystalline High-efficiency Solar Panel is ideal for bringing power to applications when away from the grid. It is commonly used in RV, marine, gate opener, boat, ...



[Standard Solar Panel Sizes And Wattages \(100W-500W Dimensions\)](#)

The goal here is to get to the average solar panel size by wattage. You can find typical dimensions of 100W, 150W, 170W, 200W, 200W, 220W, 300W, 350W, 400W, and 500W solar panels summarized ...

- LiFePO₄
- Wide temp: -20°C to 55°C
- Easy to expand
- Floor mount&wall mount
- Intelligent BMS
- Cycle Life:≥6000
- Warranty :10 years





Contact Us

For catalog requests, pricing, or partnerships, please visit:

<https://iwap.com.pl>

Phone: +34 919 456 782

Email: info@iwap.com.pl

Scan the QR code to access our WhatsApp.

