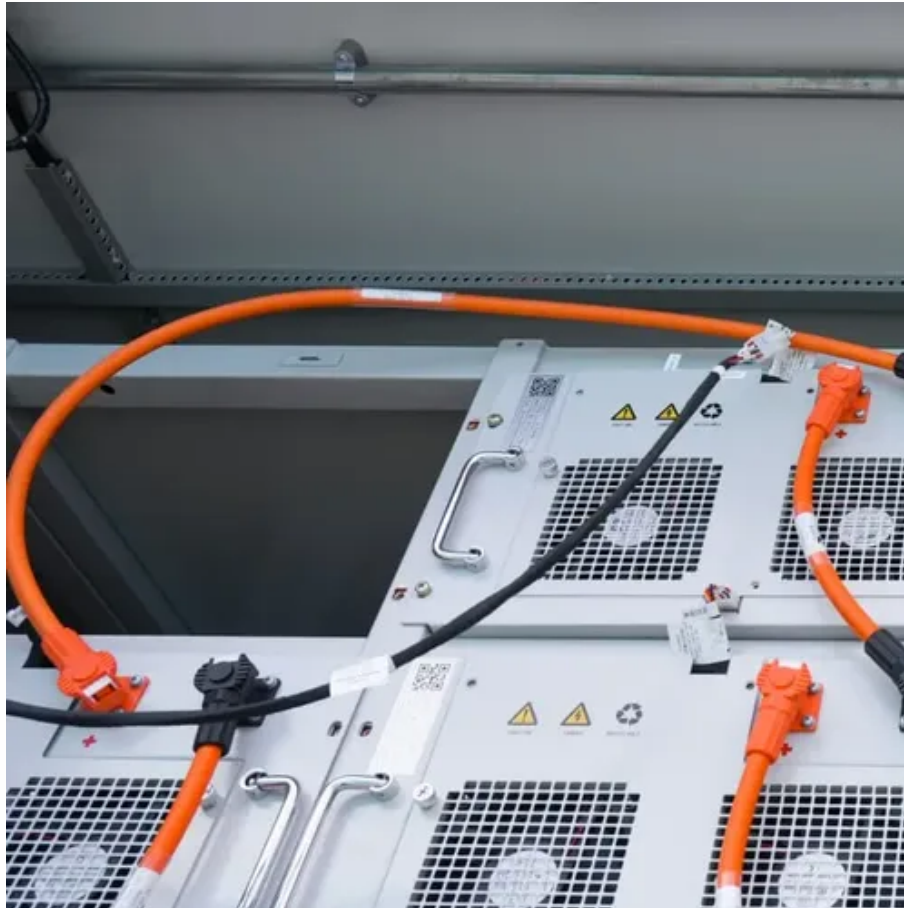




50kWh Battery Cabinet for Steel Plants vs Traditional Batteries





Overview

When selecting a 50 kWh energy storage system, prioritize battery chemistry (like lithium iron phosphate), round-trip efficiency (aim for 90%+), depth of discharge (80-100%), cycle life (6,000+ cycles ideal), and scalability. Unlike residential ESS units, these systems store hundreds of kWh to MWh of energy, supporting: In today's rapidly evolving energy landscape, Energy. An energy storage battery cabinet is a secure, compact enclosure designed to house and protect battery systems used for energy storage. Energy storage. Advanced Commercial Battery Storage System, BESS 50kw/150Kwh High-Voltage Battery Setup for Commercial Energy Storage The LiFePO4 battery system engineered for HV (high voltage PCS) applications, boasting a nominal voltage of 768V. It showcases integrated 150Ah Prismatic LiFePo4 battery cells. These systems act as shock absorbers for electricity flows, addressing three critical challenges: A mid-sized plant in Izmir implemented a 20MW/80MWh lithium-ion battery system with EK SOLAR 's intelligent management platform. For most residential off-grid or backup power needs, a modular 50 kWh.



50kWh Battery Cabinet for Steel Plants vs Traditional Batteries

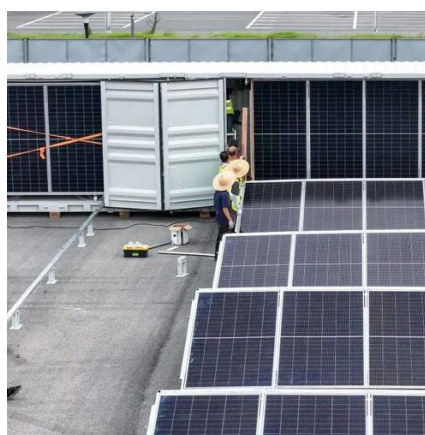


[Energy Storage Battery Cabinet: How It Works and Components 2025](#)

Discover how to optimize your energy storage battery cabinet with expert cooling solutions like filter fans, cabinet A/Cs, and thermostats for peak performance.

[Hybrid 50KWh Industrial & Commercial Energy Storage Cabinet.Battery](#)

It includes battery, PCS, MPPT, and diesel generators interface, supporting up to 10 units in parallel for enhanced energy storage capacity and efficiency. Please fill out the form below to request a quote or ...



[Industrial ESS Cabinets: Large-Scale Energy Storage Solutions](#)

Industrial ESS Cabinets provide megawatt-scale energy storage for factories, data centers & utilities. Discover how these high-capacity battery systems reduce demand charges, enable renewables ...



[What kind of energy storage is suitable for steel plants?](#)

Energy storage that is suitable for steel plants includes battery storage systems, compressed air energy storage, thermal energy storage, and pumped hydro storage. 2. Each of ...



[Commercial Battery Storage System, BESS 50kw/150Kwh.](#)

The battery array is composed of 10 series-connected modules within each rack. Moreover, the system is fortified with an inbuilt high voltage combiner box, culminating in a comprehensive ...

[Commercial Battery Storage System, BESS 50kw/150Kwh.](#)

The battery array is composed of 10 series-connected modules within each rack. Moreover, the system is fortified with an inbuilt high voltage combiner box, culminating in a comprehensive voltage output ...



[50kW 50kWh Compact Battery Storage Cabinet for Commercial Backup](#)

Supports simultaneous connections of load batteries, power grid, diesel generators, and photovoltaics.

[50 to 200kW Battery Energy Storage Systems.](#)



Discover the MEGATRON Series - 50 to 200kW Battery Energy Storage Systems (BESS) tailored for commercial and industrial applications. These systems are install-ready and cost-effective, offering ...



[Electric Energy Storage Solutions for Steel Plants: Cutting Costs and](#)

This article explores how modern electric energy storage systems are revolutionizing steel production by stabilizing power demand, reducing operational costs, and supporting sustainable practices.

Commercial & Industrial ESS Solutions

It offers energy ranging from 50kWh to 1MWh and covers most of the commercial and industrial application scenarios, such as load shifting, renewable clipping, and back-up power, etc.



[How to Choose the Best 50 kWh Energy Storage System: A Complete ...](#)

Learn what to look for in a 50 kWh energy storage system, including key specs, types, pricing, and top considerations for home or commercial use.



Contact Us

For catalog requests, pricing, or partnerships, please visit:

<https://iwap.com.pl>

Phone: +34 919 456 782

Email: info@iwap.com.pl

Scan the QR code to access our WhatsApp.

