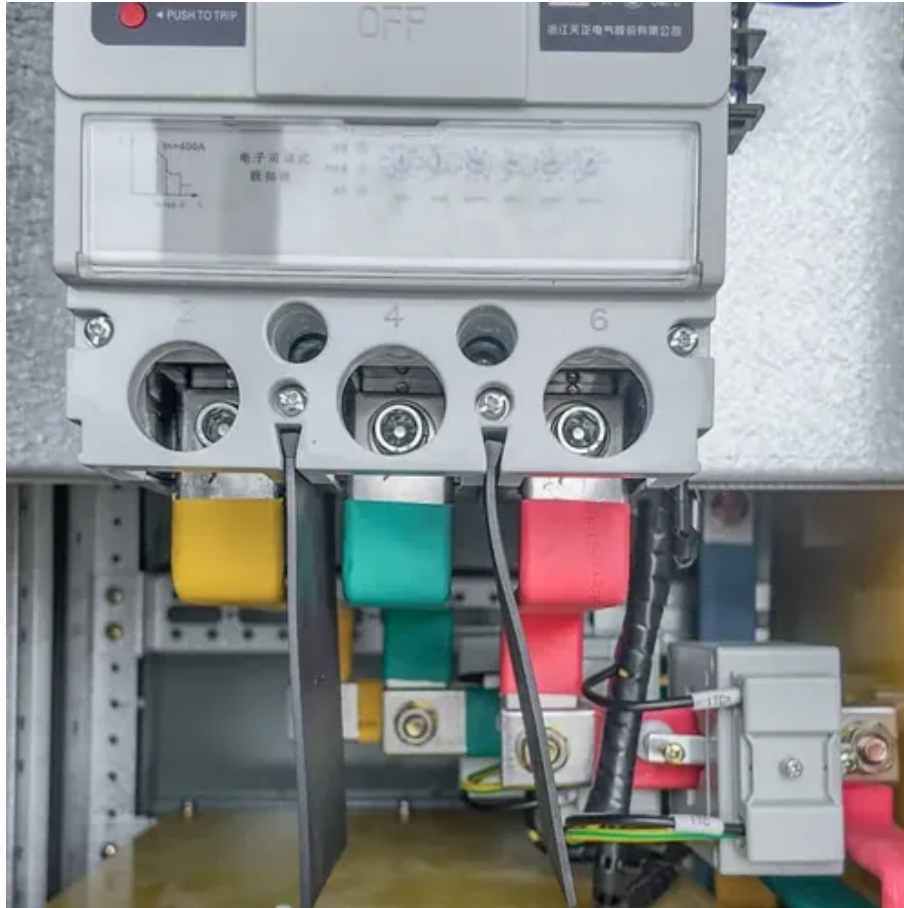




3mw wind turbine power generation





Overview

This dataset contains yearly electricity generation, capacity, emissions, import and demand data for over 200 geographies. You can find more about Ember's methodology in this document. Our 3 MW turbines offer high capacity factor with low balance of plant (BOP) costs for transmission-constrained sites in the United States and India. As one of the most installed turbines in the United States—including the largest wind project in the Western Hemisphere (see video below)—GE. Smart Sensing: Key components are monitored by multiple strategic sensors that enable predictive diagnostics and precision control. Smart transmission: Significantly improves data transmission efficiency and convenience for the new 3MW model, while supporting remote data collection and. · 3. XMW series with the rated output from 3. 65 MW features an increased rotor diameter and hub height up to 168 m and 140 m respectively. Data source: Ember (2026); Energy Institute - Statistical Review of World Energy (2025) - Learn more about this data Measured in terawatt-hours. Ember (2026);. Boland also provides investment, acquisition and operation of wind power plants and photovoltaic power stations and hydro power plants.



3mw wind turbine power generation

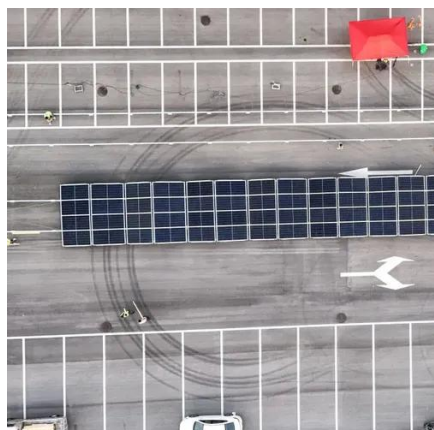


GW 3.0MW (S)

Smart transmission: Significantly improves data transmission efficiency and convenience for the new 3MW model, while supporting remote data collection and transmission. Smart control: Flexible power ...

3 MW Onshore Wind Turbine , GE Vernova

Industry-leading power performance, and the first wind turbines with an AI-powered digital blade quality certificate. Configured for reduced complexity and ease of project execution, with more than 10,000 ...



3S MW PMDD , Goldwind

While the design principles of the Goldwind 3S MW and 2S MW remain much the same, the new 3S MW Smart Wind Turbine introduces best-in-class energy production, smarter controls and industry ...

[Professional 3MW Wind Turbine Manufacturer](#)

The WT3000+ (3rd generation) wind turbine series has our custom technologies. Adhering to a design philosophy of high reliability and maintainability, it integrates intelligent manufacturing technology to ...



Viewer , USWTDB

The USWTDB provides both onshore & offshore wind turbine locations in the United States, related facility information, and turbine technical specifications. To learn more about the app, watch our ...

SUPPORT REAL-TIME ONLINE MONITORING OF SYSTEM STATUS



Wind power generation, 2025

Annual electricity generation from wind is measured in terawatt-hours (TWh) per year. This includes both onshore and offshore wind sources.



[S 144 Wind Turbine Generator , Suzlon Energy LTD](#)

Suzlon introduced the new 3 MW series to unlock unviable sites and to deliver improved energy yield suitable for all wind regimes. The S144 wind turbine generator is one of the largest in India, ...



[3MW Onshore Platform Brochure 33172 LTR 202103 R , PDF , Wind Turbine](#)



The document discusses GE's 3 MW wind turbine platform, including its specifications and features. It provides details on the turbine models in the platform ranging from 3.2 MW to 4.2 MW capacity that ...



Appendix H GE Turbine Specifications

forming turbine for Class III winds. GE has employed selected legacy components with proven performance for the 3 MW platform, helping to ensure the consistent performance and reliability .



Contact Us

For catalog requests, pricing, or partnerships, please visit:

<https://iwap.com.pl>

Phone: +34 919 456 782

Email: info@iwap.com.pl

Scan the QR code to access our WhatsApp.

