



260W solar panels generate the highest power at noon in winter





Overview

Yes, solar panels can still produce energy in winter. By optimizing the efficiency of the panels, homeowners can ensure a steady energy supply during the colder. Solar panels actually perform better in cold temperatures thanks to the basic principles of semiconductor physics. Real-World Performance Gap: Expect 75-85%. During winter, daylight hours shift because every day the sun rises a little late and sets a little earlier than the previous day. In this article, we will explore the impact of. When the temperatures start to drop and snowflakes begin to fall, you might wonder, Can solar panels still work in the winter?

The answer is a resounding yes! Even when the days are shorter and the skies may seem cloudier, solar energy remains a reliable source of power.



260W solar panels generate the highest power at noon in winter



[260 Watt Solar Panel Guide 2025: Complete Buyer's Guide & Reviews](#)

A 260 watt solar panel represents a mid-range power output option that continues to serve specific applications effectively in 2025, despite the industry's shift toward higher wattage modules. ...

[Solar panels performance in the winter vs summer \(with examples\)](#)

If you're thinking of going solar, you can use The Solar Nerd calculator to estimate how much electricity you might generate in the winter versus the summer. The calculator quickly ...



[Solar output in the winter: what to expect, and how to optimize it](#)

In this article, we will explore the effects of winter on solar energy output and provide practical tips on how to maximize the efficiency of your solar panels even in colder seasons.

Solar Panel Output Winter Vs Summer

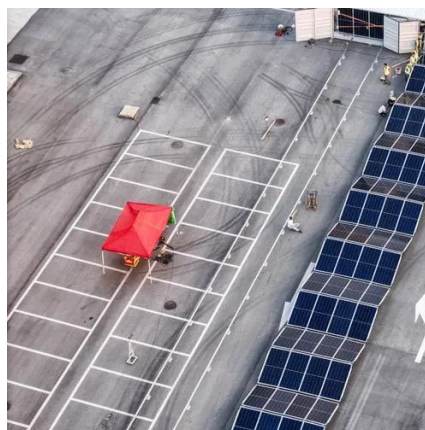
What Is Solar Panel Output Winter vs Summer? What Is Solar Panel Production by month? What Time of Year Do Solar Panels Work Best? After learning what time of day do solar panels work best, let's find out in detail about solar panel output winter vs summer. No, this is not the case. Solar panels will produce electricity



even in winter but there will be an average 50% reduction. According to the sourcesolar panels tend to work more efficiently in cool months due to the even flo See more on energytheory renewgenius

How much Electricity does Solar generate in Winter ...

On average, solar panels generate about 30% to 35% less electricity during winter compared to summer. However, this does not mean that your solar panel ...



[How Much Power Do Solar Panels Generate in Winter? \(Spoiler: ...](#)

Let's address the snow elephant in the room first: photovoltaic panels don't hibernate like bears. While winter brings shorter days and festive sweaters, solar panels often perform better per hour of sunlight ...

[Solar Panel Output: Summer vs Winter Production](#)

Solar panels generate electricity year-round, but their output varies dramatically between seasons. Understanding how summer and winter conditions affect energy production helps ...



[Solar Panels in Winter: Year-Round Energy , Wolf River Electric](#)

High-efficiency solar panels can still generate significant power during those precious daylight hours, storing any excess energy in battery systems or feeding it back into the grid.



[Solar Panel Performance: Winter vs Summer \(Guide 2023\)](#)

In the winter, solar panels can perform better on colder, sunnier days. On the other hand, in the summer, solar panels may be subject to efficiency losses because of high temperatures. While ...



[How much Electricity does Solar generate in Winter Months](#)

On average, solar panels generate about 30% to 35% less electricity during winter compared to summer. However, this does not mean that your solar panel system will not generate any electricity ...

Solar Panel Output Winter Vs Summer

Solar panels will produce electricity even in winter but there will be an average 50% reduction. According to the source solar panels tend to work more efficiently in cool months due to ...



[8 Solar Panel Performance During Winter Months That Maximize Power](#)

Discover how solar panels actually perform better in cold temperatures, plus expert tips for maximizing winter energy production and handling snow coverage to ensure optimal solar power generation.



Contact Us

For catalog requests, pricing, or partnerships, please visit:

<https://iwap.com.pl>

Phone: +34 919 456 782

Email: info@iwap.com.pl

Scan the QR code to access our WhatsApp.

