



# 12v inverter h-bridge





## 12v inverter h-bridge



### [H-Bridge Bootstrapping - Homemade Circuit Projects](#)

Without bootstrapping facility an H-bridge topology with identical mosfets simply won't work. We will try to understand the details through a step by step explanation.

### **12V-220V H-Bridge Inverter DIY Homemade**

In this video, I have made a 12V-220V H-Bridge Inverter DIY using Arduino. H-bridge is an electronic circuit that switches the polarity of a voltage and is used to allow DC motors to run forwards or ...



### [Make Your Own H-Bridge Circuit for Inverters](#)

Make Your Own H-Bridge Circuit for Inverters: Hello everyone! Thank you for stopping by this article on making a H-Bridge circuit for converting DC voltages to AC voltage.



### [Application Note Regarding H Bridge Design and Operation](#)

Abstract This application note is intended to be an explanation and design aid for H Bridges used in inverters and motor controllers. Typical H Bridge applications and a description of the device will be explained and ...



### [12V to 220V Inverter H-Bridge Driver with NE555 and IRFP460](#)

Build a bulletproof 12V to 220V 1000W square-wave inverter with NE555 + IRFP460 H-bridge. Full circuit analysis, bootstrap driver secrets.



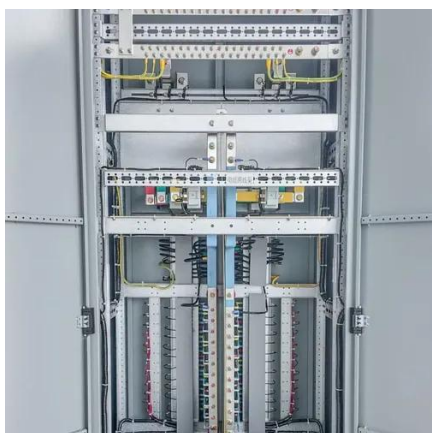
### [100A 12V H-Bridge Project , Mark Harris , Industry Expert](#)

Synopsis: Build a powerful 1200W motor driver with Mark Harris in this open source H-Bridge project. Learn about H-Bridges, and designing high current circuit boards with this 100 amp demonstration ...



### [H-bridge Circuit for DC Motor Bidirectional Control](#)

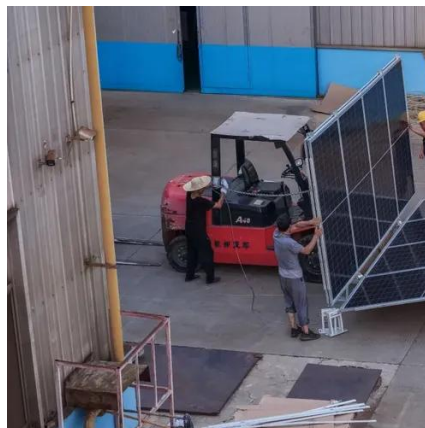
This full-bridge, H-bridge, or double half-bridge circuit is commonly used to allow DC motors to rotate forward and backward by selecting the diagonally opposite switching pairs.



### [H-Bridge Bootstrapping - Homemade Circuit Projects](#)



What Are High-Side Low-Side MOSFETs Why This Is A Problem? Why Doesn't The MOSFET Burn with Such High VGS We all know that a BJT requires a minimum 0.6V between its base/emitter to conduct fully. Similarly, a mosfet requires around 6 to 9V across its gate/source to conduct fully. Here, "fully" means optimal transfer of the mosfet drain voltage or the BJT collector voltage to their respective source/emitter terminals, in response to gate/base voltage in See more on homemade-circuits Basic Electronics Tutorials



## H-bridge Circuit for DC Motor Bidirectional Control

See More

This full-bridge, H-bridge, or double half-bridge circuit is commonly used to allow DC motors to rotate forward and backward by selecting the diagonally opposite switching pairs.



### [H Bridge Inverter Circuit using IC SG3525 and MOSFET IRFZ44N](#)

This article explains an H-Bridge inverter circuit based on the SG3525 IC and MOSFETs like IRFZ44N or IRF3205 or IGBT like GT50JR22, which can convert DC to AC with a frequency of 50Hz or 60Hz, ...

## H BRIDGE

The circuit below is an H bridge circuit which can handle 1000W to 3000W 12V, 1000W to 4000W 24V, 1000W to 5000W 48V. Before you use any mosfet, please make sure your highest switching voltage is less than the ...



## Universal H-Bridge Circuit Module

In this article I will elucidate a simple universal H-



bridge module using BJTs and N-channel MOSFETs. This module can be integrated with any standard oscillator ICs such as IC 4047 or IC SG3525 or ...





## Contact Us

---

For catalog requests, pricing, or partnerships, please visit:

<https://iwap.com.pl>

Phone: +34 919 456 782

Email: [info@iwap.com.pl](mailto:info@iwap.com.pl)

Scan the QR code to access our WhatsApp.

