



10MW Energy Storage Battery Cabinet Product Specifications

Modular design,
unlimited combinations in parallel

BUILT-IN DUAL FIRE PROTECTION MODULE





Overview

Modular design, easy installation and operation; Support battery expansion; System cycle life ≥ 10 years; Support peak load shifting and important load backup; Integrated BMS management system to support intelligent management; Compatible with CANbus/RS485 communication interface;. Modular design, easy installation and operation; Support battery expansion; System cycle life ≥ 10 years; Support peak load shifting and important load backup; Integrated BMS management system to support intelligent management; Compatible with CANbus/RS485 communication interface;. Battery energy storage systems (BESSs) play an important part in creating a compelling next-generation electrical infrastructure that encompasses microgrids, distributed energy resources (DERs), DC fast charging, Buildings as a Grid and backup power free of fossil fuels for buildings and data. container, which comprises one complete 10MW/20. 064MWh battery energy storage un he Point of Connection (“POC”) will be 17. The c e to the AC output side, and also together with certain additional auxiliary loss. loss y and performance c owing specified. ers lay out low-voltage power distribution and conversion for a b de ion - and energy and assets monitoring - for a utility-scale battery energy storage system entation to perform the necessary actions to adapt this reference design for the project requirements. It combines advanced technology with robust safety features to deliver reliable and efficient performance for diverse energy needs.



10MW Energy Storage Battery Cabinet Product Specifications



MPack 233A

Compact and high-density design optimizes space utilization while providing a substantial 233kWh energy capacity. Equipped with comprehensive safety features, including real-time battery ...

5MW/10MWh ESS Specifications

5MW/10MWh BESS Figure 1: 5MW/10MWh BESS Diagram 5MWh Battery system



[Technical Proposal of 10MW-20.064MWh Battery Energy Storage ...](#)

BESS solution utilizes long-life lithium iron phosphate (LFP) batteries. With ultra-safety and higher battery performance, system Capex and Opex in the lifespan are aimed to be reduced, ...

[30kw-10MW+ Commercial & Industrial Lithium Battery For home ...](#)

The energy storage battery Containers are built on a modular structure. We can customize them to match the capacity and power requirements of the client's needs.



10 MWh Battery Storage Systems: Powering Large-Scale Renewable Energy

As global renewable energy adoption accelerates - particularly in solar-rich regions like California and Germany - the need for 10 MWh battery solutions has surged 300% since 2020.



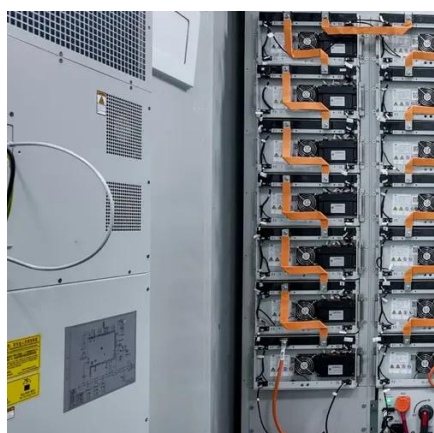
250 to 1000 kWh usable stored energy

Versatile energy storage for commercial and industrial applications. The demand for power, and variation in the demand, continues to increase due to end-user loads and electrification, including the ...



Enphase IQ Battery 10

tery 10 The Enphase IQ Battery 10 all-in-one AC-coupled storage system is reliable, smart, simple, and safe. It is comprised of three base IQ Battery 3 units, has a total usable energy capacity of 10.08 ...



Utility-scale battery energy storage system (BESS)



This reference design focuses on an FTM utility-scale battery storage system with a typical storage capacity ranging from around a few megawatt-hours (MWh) to hundreds of MWh.



[Energy Storage Solution LFP Battery Cabinet](#)

LFP Battery Cabinet Modular design allows the system to scale out from 295 kW to 4.41 MWh. Fully equipped for rapid commissioning with support for truck transportation. Consistent quality ...

[Residential energy storage battery cabinet](#)

Modular design, easy installation and operation; Support battery expansion; System cycle life ≥ 10 years; Support peak load shifting and important load backup; Integrated BMS management system to ...





Contact Us

For catalog requests, pricing, or partnerships, please visit:

<https://iwap.com.pl>

Phone: +34 919 456 782

Email: info@iwap.com.pl

Scan the QR code to access our WhatsApp.

